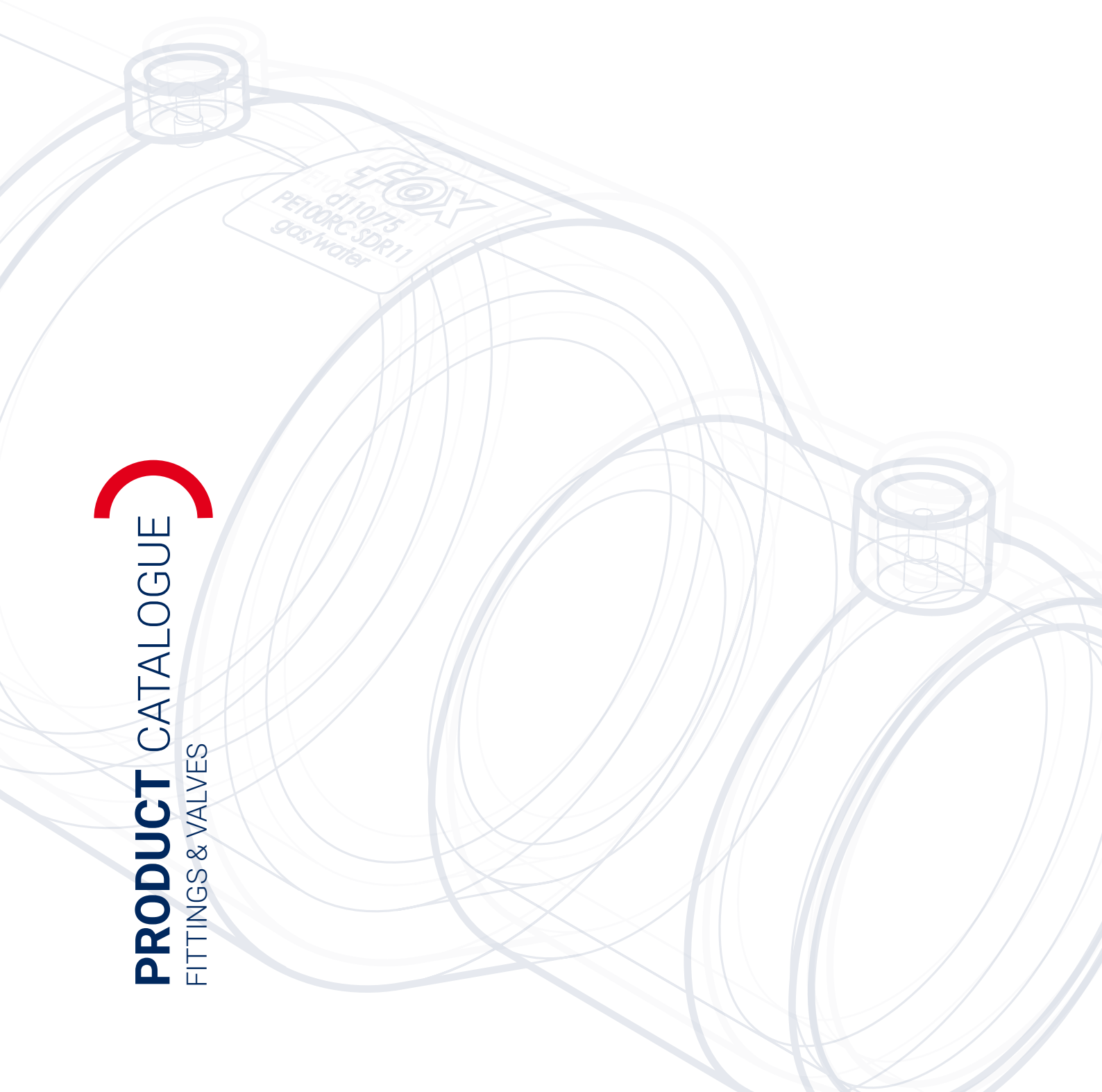




PRODUCT CATALOGUE
FITTINGS & VALVES





STRONG CONNECTION

We are one of the leading global manufacturers of injection-molded fittings and tools, supporting investments in gas, water and hydrogen distribution systems.

With our vast knowledge and significant experience, gained from thousands of completed investments, we are one of the world's most important suppliers of high-quality solutions.

We are creating a strong connection, not only with our products. Through continuous investments in infrastructure, cutting-edge equipment, and our team, we are able to develop, produce and support in a practice-oriented manner, with an eye for detail and the far-sighted approach.

Meet all of our strengths.



FROM DESIGN TO IMPROVEMENT

Using leading-edge technology, business cooperators feedback and our best ideas, we create innovative and technically advanced solutions to meet the ever-evolving needs of customers.

We offer more than 1000 products, but also customized solutions, providing the answer to highly individual customer needs and industry-specific requirements.

NO.1 JOB

Quality is the key aspect in all our activities. We provide extensive process of testing new products, as well as release control of the production with our state-of-the-art laboratory.

With production only from the original PE 100-RC, alignment with all international standards and a traceability code on each fitting, we ensure a superior level of quality.

BIG DIFFERENCE

Our experience ensures not only top-quality products, but also the first-class customer care. We provide a broad range of support: from technical advice, through a strong commitment delivery and service, to construction site support and trainings.

We process tons of material, supplying few millions of fittings per year, constantly working to your advantage.

PE 100-RC MATERIAL

The raw material complies with the requirements of EN 1555 and EN 12201. Electrofusion and spigot fittings are made of PE 100-RC.

Parameter	Properties	Unit of measure	Test method
Density	≥ 930	kg/m ³	ISO 1183-1
Melt-flow rate (MFR)	from 0,2 to 1,4	g/10 min	ISO 1133
Oxidation induction time	≥ 20	min	ISO 11357-6
Minimum required strength (MRS)	10	MPa	ISO 12162
Color	Black	-	-

GEOMETRICAL CHARACTERISTICS

Measurements of dimensions comply with requirements of ISO 3126. All dimensions of fittings comply with requirements of EN 1555 and EN 12201.

RESISTANCE TO INTERNAL PRESSURE

Gas	Water	Hydrogen
Maximum operation pressure (MOP)		
10 bar - for SDR 11	PN16 for SDR 11	10 bar - for SDR 11
5 bar - for SDR 17	PN10 for SDR 17	5 bar - for SDR 17

MARKING

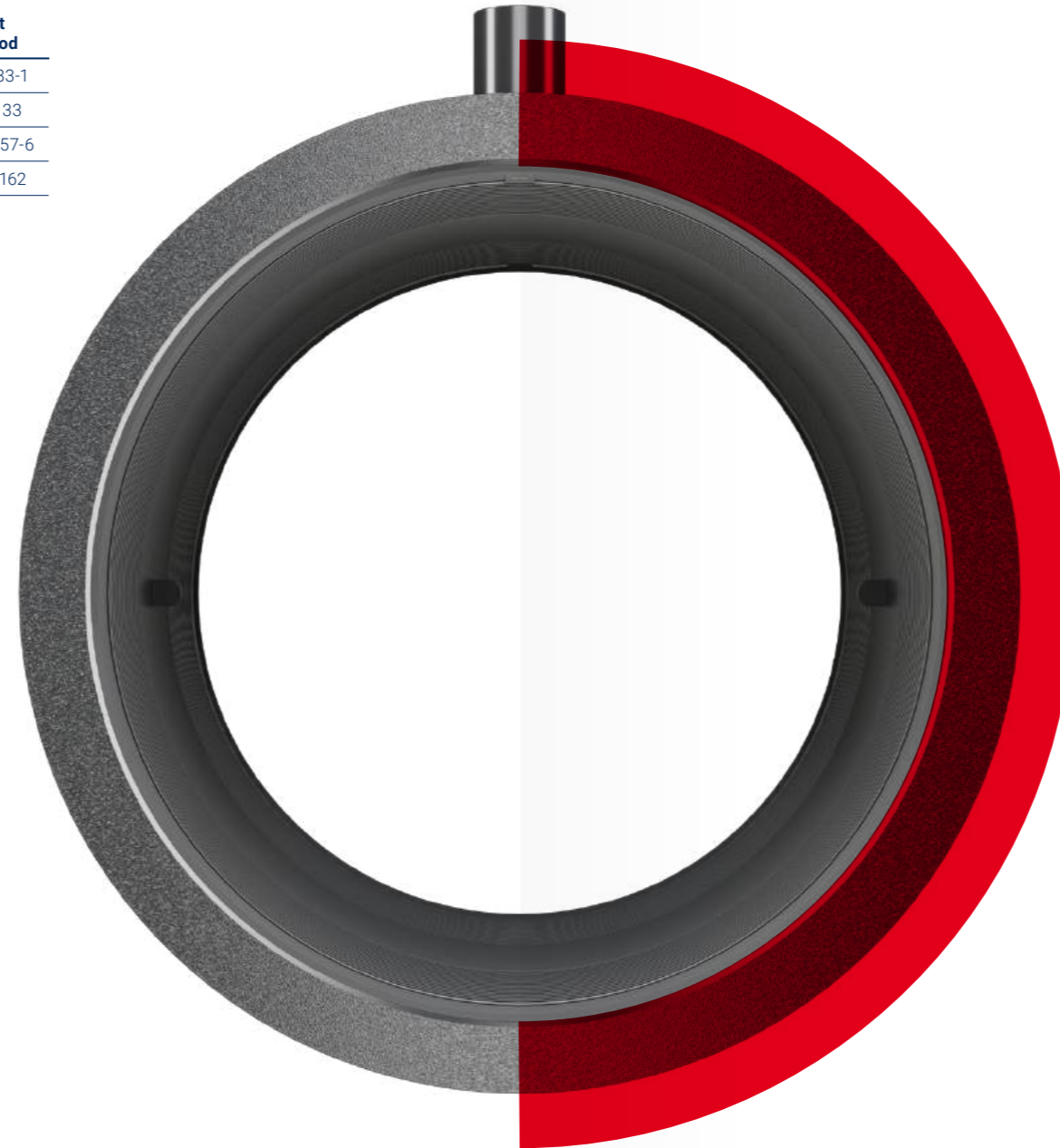
Data	Feature or symbol
Standard number	EN 12201 EN 1555
Trademark	FOX
Nominal diameter of the pipe	e.g. 110
Material	e.g. PE100RC
SDR of the fitting	e.g. SDR 11
SDR welding range (pipe SDR)	e.g. SDR 11 - SDR 17
Applications	e.g. gas/water/hydrogen
Manufacturing date	e.g. 01.2020

WELDING

Welding of the fittings can be made by any electrofusion welding machine in two ways:

1. Automatically with a barcode reader
2. Manually - entering data from the label

Electrofusion fittings can weld pipes PE 100, PE 100-RC and PE 80.



ELECTROFUSION FITTINGS	6
PE/BRASS & PE/STEEL TRANSITIONS	31
PE BALL-VALVES	38
SPIGOT FITTINGS	44
FLANGES	75

ELECTROFUSION FITTINGS

Electrofusion fittings are manufactured using modern, automated lines for plastic processing. It guarantees the high and stable quality of the detail, trouble-free installation and durability of the connection, no matter what medium is transported in the pipeline.



UNIVERSAL CONNECTORS
diameter from 4.0 to 4,7 mm
(suitable for all welding machines)

40V VOLTAGE
always for FOX products

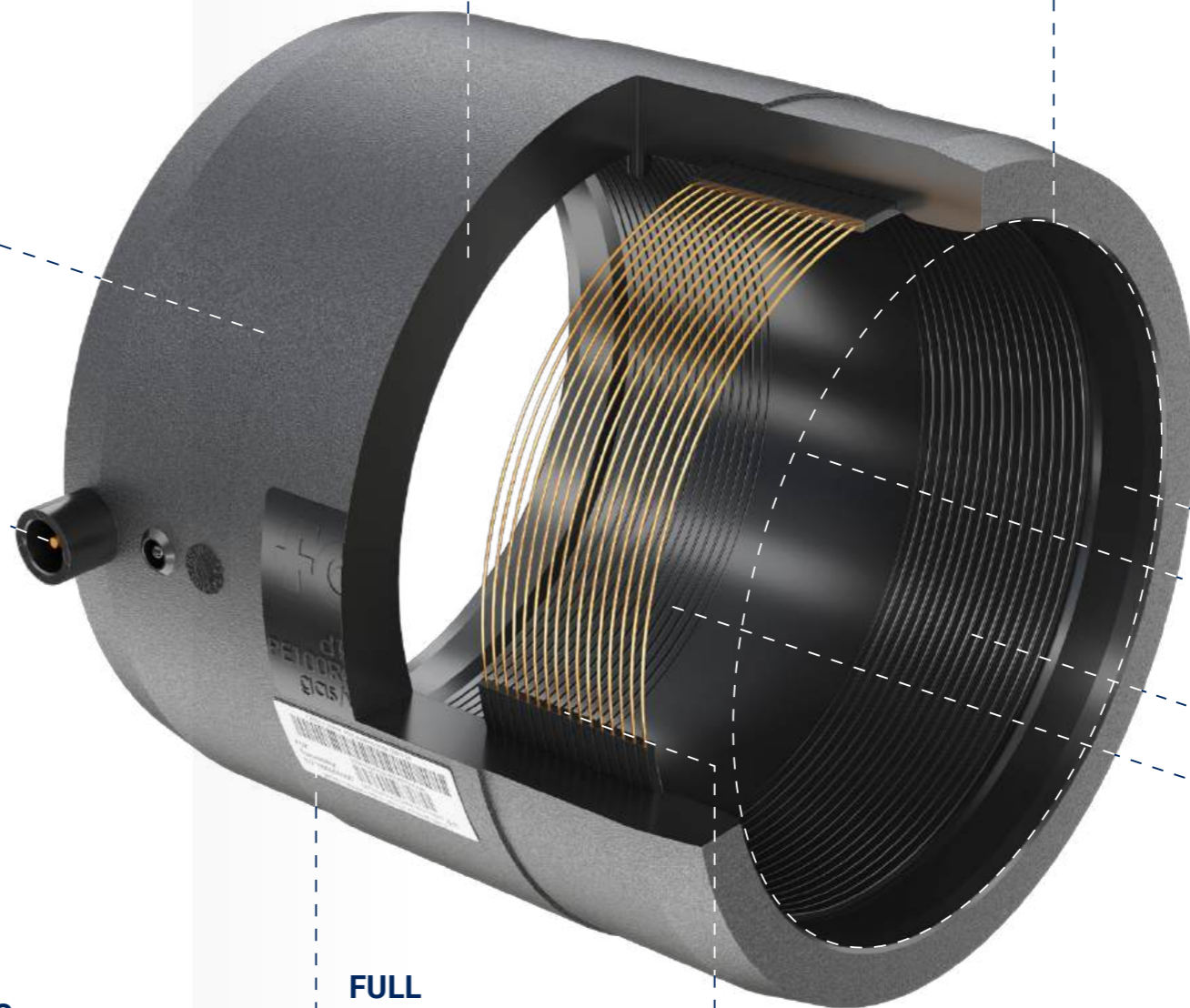
PE 100-RC
for ultimate strength
and crack resistance

SUITABLE
for gas, water, hydrogen,
compressed air, glycol systems

MOP
up to 25 bar

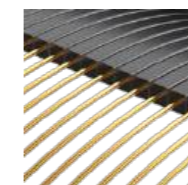
FULL DIAMETER
range 20-630 mm

WIDE COLD ZONES
preventing the flow
of the plasticized PE



FULL TRACEABILITY
system

LONG HEATING ZONES
for larger connection area



WIRINGS PROTECTED
against mechanical damage
and short circuit



ELECTROFUSION COUPLER

SDR 11



water
16 bar



gas
10 bar



hydrogen
10 bar



PE 100-RC
material



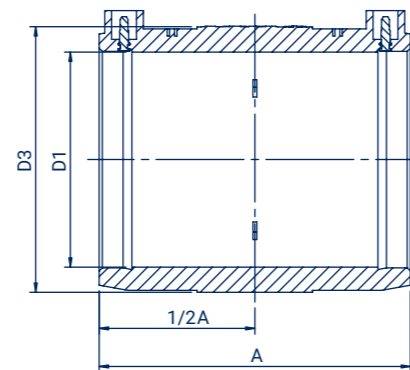
10 MPa



removable
center stop



355 - 630
no center stop



Size D1 (mm)	Code	A (mm)	D3 (mm)	Weight (kg)	Packing
20	ME02011	84	35	0,05	200
25	ME02511	84	36	0,05	200
32	ME03211	84	43	0,05	180
40	ME04011	92	52	0,08	150
50	ME05011	93	64	0,11	100
63	ME06311	114	79	0,18	50
75	ME07511	135	97	0,35	30
90	ME09011	148	112	0,42	22
110	ME11011	157	134	0,68	14
125	ME12511	167	152	0,86	18
140	ME14011	176	168	1,11	14
160	ME16011	180	195	1,58	12
180	ME18011	186	213	1,70	8
200	ME20011	189	241	2,39	6
225	ME22511	221	271	3,08	4
250	ME25011	224	295	3,82	2
280	ME28011	247	336	5,40	2
315	ME31511	258	379	7,58	2
355	ME35511	296	425	9,40	2
400	ME40011	303	476	14,17	1
450	ME45011	320	537	18,45	1
500	ME50011	378	600	27,09	1
560	ME56011	388	690	36,16	1
630	ME63011	396	750	46,20	1



ELECTROFUSION COUPLER

SDR 7,4



water
25 bar



gas
10 bar



hydrogen
10 bar



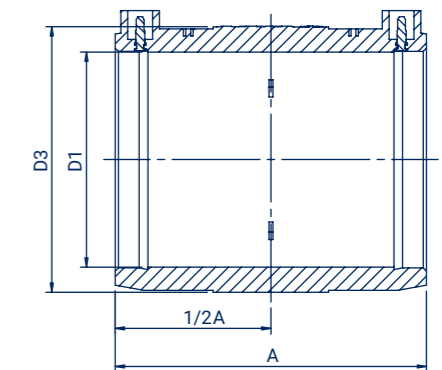
PE 100-RC
material



10 MPa



removable
center stop



Size D1 (mm)	Code	A (mm)	D3 (mm)	Weight (kg)	Packing
50	ME05074	114	79	0,32	36
63	ME06374	134	95	0,49	30
75	ME07574	148	110	0,70	20
90	ME09074	155	132	1,06	14
110	ME11074	166	150	1,27	8
160	ME16074	180	208	2,31	8
225	ME22574	220	291	5,36	4



ELECTROFUSION COUPLER

SDR 17



water
10 bar



gas
5 bar



hydrogen
5 bar



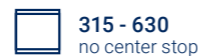
PE 100-RC
material



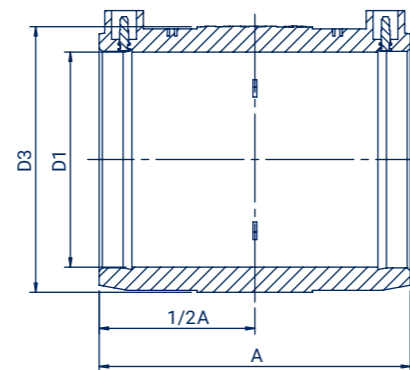
10 MPa



removable
center stop



315 - 630
no center stop



Size D1 (mm)	Code	A (mm)	D3 (mm)	Weight (kg)	Packing
110	ME11017	157	134	0,70	14
125	ME12517	167	152	0,90	18
140	ME14017	176	168	1,11	14
160	ME16017	180	195	1,58	12
180	ME18017	186	213	1,70	8
200	ME20017	189	241	2,39	6
225	ME22517	221	271	3,04	4
250	ME25017	224	295	3,88	2
280	ME28017	247	336	5,48	2
315	ME31517	255	352	4,92	2
355	ME35517	296	412	7,99	2
400	ME40017	303	462	9,86	1
450	ME45017	320	512	13,20	1
500	ME50017	377	575	20,05	1
560	ME56017	390	630	22,34	1
630	ME63017	396	714	27,70	1



ELECTROFUSION REDUCER

SDR 11



water
16 bar



gas
10 bar



hydrogen
10 bar



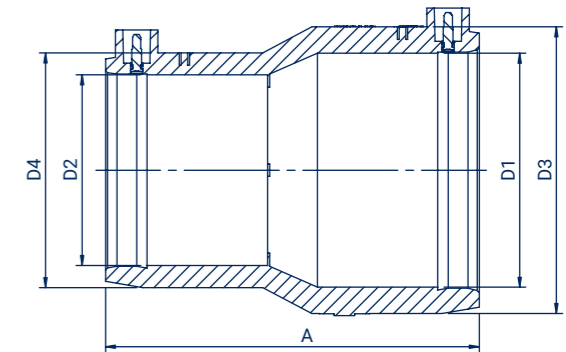
PE 100-RC
material



10 MPa



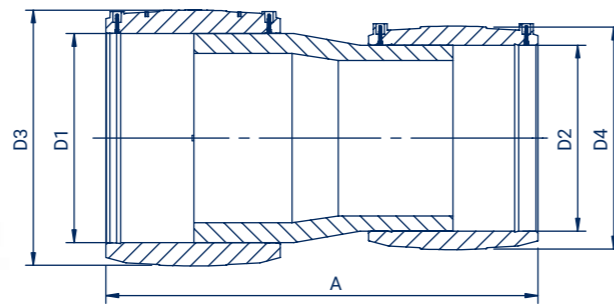
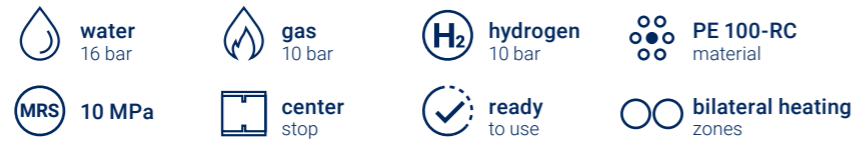
center
stop



Size D1/D2 (mm)	Code	A (mm)	D3 (mm)	D4 (mm)	Weight (kg)	Packing
25/20	RE02502011	84	35	35	0,05	200
32/20	RE03202011	98	43	35,5	0,06	180
32/25	RE03202511	98	43	35,5	0,05	180
40/25	RE04002511	109	53	35	0,09	130
40/32	RE04003211	92	52	42	0,07	150
50/25	RE05002511	117	66	37	0,13	100
50/32	RE05003211	117	65	43	0,11	80
50/40	RE05004011	112	65	53	0,14	90
63/25	RE06302511	142	82	37	0,21	50
63/32	RE06303211	127	82	47	0,20	50
63/40	RE06304011	132	80	53	0,19	50
63/50	RE06305011	122	82	66	0,21	50
75/50	RE07505011	143	93	65	0,28	32
75/63	RE07506311	142	95	80	0,38	30
90/50	RE09005011	171	115	68	0,48	20
90/63	RE09006311	169	115	82	0,49	20
90/75	RE09007511	161	112	95	0,45	20
110/63	RE11006311	180	135	82	0,61	12
110/75	RE11007511	163	140	100	0,82	12
110/90	RE11009011	175	135	111	0,68	12
125/63	RE12506311	198	151	83	0,77	20
125/90	RE12509011	181	151	112	0,83	20
125/110	RE12511011	181	151	136	0,88	20
160/90	RE16009011	231	195	133	1,97	12
160/110	RE16011011	231	195	136	1,69	12
160/125	RE16012511	201	196	153	1,57	12
180/125	RE18012511	208	218	153	1,87	8
200/125	RE20012511	227	238	152	2,03	5
200/160	RE20016011	226	239	196	2,35	4
200/180	RE20018011	225	238	213	2,39	4
225/160	RE22516011	260	266	196	3,38	4
225/180	RE22518011	251	266	214	3,15	3
225/200	RE22520011	250	266	239	3,42	3



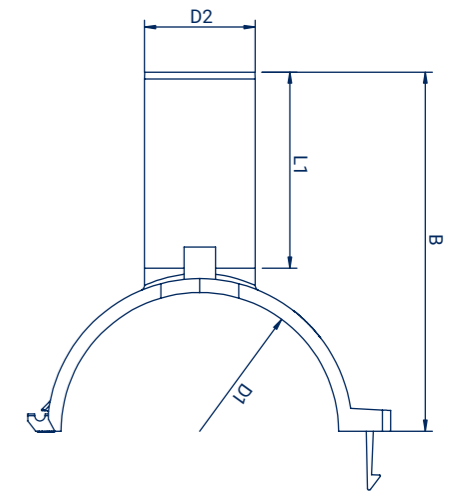
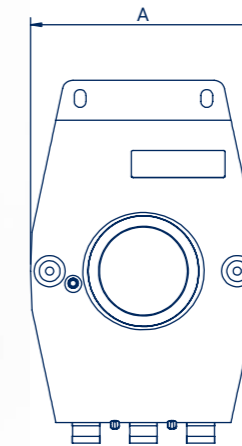
ELECTROFUSION REDUCER BHZ SDR 11



Size D1/D2 (mm)	Code	A (mm)	D3 (mm)	D4 (mm)	Weight (kg)	Packing
180/160	RED18016011	463	213	195	5,44	2
250/160	RED25016011	518	295	195	10,08	2
250/200	RED25020011	533	295	238	10,47	2
250/225	RED25022511	555	295	266	12,19	1



BRANCH SADDLE SDR 11



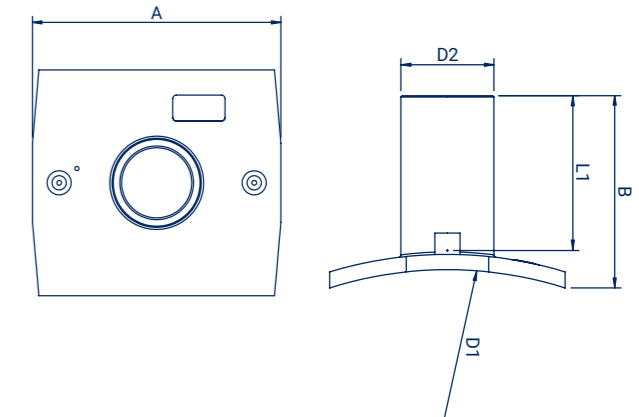
Size D1/D2 (mm)	Code	A (mm)	B (mm)	L1 (mm)	Weight (kg)	Assembly	Packing
63/20	OE06302011	126	109	67	0,22	PE detail	30
63/25	OE06302511	127	110	70	0,23	PE detail	30
63/32	OE06303211	127	137	97	0,25	PE detail	30
63/40	OE06304011	127	136	96	0,25	PE detail	30
63/50	OE06305011	127	136	95	0,27	PE detail	20
63/63	OE06306311	127	136	97	0,33	PE detail	20
75/20	OE07502011	126	109	70	0,22	PE detail	30
75/25	OE07502511	127	111	72	0,26	PE detail	25
75/32	OE07503211	127	139	98	0,27	PE detail	20
75/40	OE07504011	127	136	98	0,28	PE detail	20
75/50	OE07505011	127	136	97	0,30	PE detail	20
75/63	OE07506311	127	136	97	0,36	PE detail	20
90/25	OE09002511	127	137	84	0,25	PE detail	40
90/32	OE09003211	127	138	85	0,24	PE detail	40
90/63	OE09006311	128	166	113	0,36	PE detail	30
110/25	OE11002511	128	137	43	0,29	PE detail	24
110/32	OE11003211	127	140	84	0,30	PE detail	30
110/63	OE11006311	128	175	113	0,40	PE detail	24
125/25	OE12502511	128	154	84	0,33	PE detail	24
125/32	OE12503211	128	140	70	0,53	PE detail	24
125/40	OE12504011	128	152	75	0,55	PE detail	24
125/63	OE12506311	128	182	113	0,43	PE detail	20
140/32	OE14003211	127	131	70	0,41	PE detail	24
140/63	OE14006311	128	148	89	0,48	PE detail	30
160/25	OE16002511	128	169	84	0,27	PE detail	18
160/32	OE16003211	128	169	85	0,42	PE detail	18
160/63	OE16006311	129	199	114	0,38	PE detail	15
160/75	OE16007511	190	195	107	0,99	PE detail	12
160/90	OE16009011	190	191	107	1,11	PE detail	12
160/110	OE16011011	190	195	107	1,30	PE detail	10



BRANCH SADDLE UNIVERSAL SDR 11



Size D1/D2 (mm)	Code	A (mm)	B (mm)	L1 (mm)	Weight (kg)	Assembly	Packing
180/25	OE18002511	128	168	85	0,50	PE detail	25
180/32	OE18003211	128	165	85	0,99	PE detail	10
180/40	OE18004011	128	170	75	0,95	PE detail	25
180/63	OE18006311	128	195	114	1,05	PE detail	10
180/75	OE18007511	190	192	107	0,78	PE detail	10
180/90	OE18009011	190	192	107	1,13	PE detail	12
180/110	OE18011011	190	194	108	1,32	PE detail	10
200/25	OE20002511	169	155	97	0,74	Belt	20
200/32	OE20003211	168	156	97	0,74	Belt	20
200/40	OE20004011	170	158	98	0,78	Belt	20
200/50	OE20005011	170	158	97	0,78	Belt	20
200/63	OE20006311	169	155	96	0,82	Belt	20
200/75	OE20007511	190	193	97	1,04	Belt	16
200/90	OE20009011	190	191	107	1,10	Belt	12
200/110	OE20011011	190	195	107	1,26	Belt	12
225/25	OE22502511	169	155	97	0,73	Belt	20
225/32	OE22503211	170	159	98	0,77	Belt	20
225/40	OE22504011	170	159	98	0,76	Belt	20
225/50	OE22505011	169	156	96	0,78	Belt	20
225/63	OE22506311	169	156	96	0,83	Belt	20
225/75	OE22507511	210	164	110	1,02	Belt	12
225/90	OE22509011	209	175	110	1,15	Belt	12
225/110	OE22511011	210	174	110	1,29	Belt	12
250/25	OE25002511	169	156	99	0,81	Belt	20
250/32	OE25003211	170	154	99	0,79	Belt	20
250/40	OE25004011	169	158	99	0,84	Belt	20
250/50	OE25005011	169	159	98	0,81	Belt	20
250/63	OE25006311	169	155	96	0,88	Belt	20
250/75	OE25007511	209	167	113	1,10	Belt	12
250/90	OE25009011	209	165	111	1,16	Belt	12
250/110	OE25011011	209	166	111	1,28	Belt	12
280/25	OE28002511	169	157	98	0,77	Belt	20
280/32	OE28003211	169	157	98	0,80	Belt	20
280/40	OE28004011	169	158	99	0,85	Belt	20
280/50	OE28005011	169	158	99	0,84	Belt	20
280/63	OE28006311	169	157	98	0,91	Belt	20
280/75	OE28007511	209	167	114	1,10	Belt	12
280/90	OE28009011	209	165	111	1,16	Belt	12
280/110	OE28011011	210	167	110	1,31	Belt	12
315/25	OE31502511	170	159	99	0,84	Belt	20
315/32	OE31503211	168	153	96	0,81	Belt	20
315/40	OE31504011	169	155	98	0,83	Belt	20
315/50	OE31505011	170	159	99	0,88	Belt	20
315/63	OE31506311	170	157	98	0,92	Belt	20
315/75	OE31507511	209	162	113	1,12	Belt	12
315/90	OE31509011	209	163	110	1,14	Belt	12
315/110	OE31511011	209	166	111	1,29	Belt	12

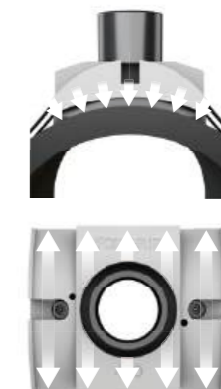


Size D1/D2 (mm)	Code	A (mm)	B (mm)	L1 (mm)	Weight (kg)	Packing
355-560/63	OE35556006311	210	165	112	0,82	20
355-560/75	OE35556007511	210	165	112	0,86	20
355-560/90	OE35556009011	210	165	112	0,88	12
355-560/110	OE35556011011	210	165	112	1,00	12
630-900/63	OE63090006311	209	155	110	0,59	20
630-900/75	OE63090007511	209	155	110	0,69	16
630-900/90	OE63090009011	209	155	110	0,70	16
630-900/110	OE63090011011	209	155	110	0,87	16

FOXGRIP CLAMPING TOOL



Pipe diameter (mm)	Code
355	FSGRIP355110
400	FSGRIP400110
450	FSGRIP450110
500	FSGRIP500110
560	FSGRIP560110
630	FSGRIP630110
710	FSGRIP710110
800	FSGRIP800110
900	FSGRIP900110



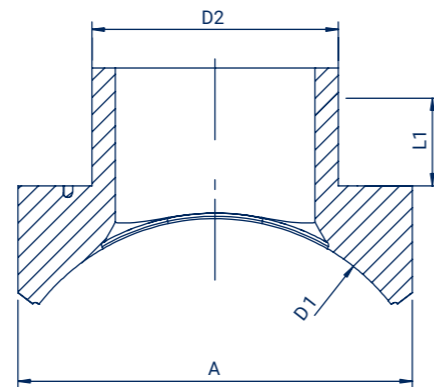
PERFECT FITTING
of the saddle to the pipe curvature

EVEN PRESSURE
around the entire circumference of the saddle



BRANCH SADDLE VLS TYPE

SDR 11



Size D1/D2 (mm)	Code	A (mm)	L1 (mm)	Weight (kg)	Packing
315/225	OE31522511	370	200	6,46	1
355/225	OE35522511	370	200	6,46	1
400/225	OE40022511	370	200	7,48	1
450/225	OE45022511	370	200	6,46	1
500/225	OE50022511	370	200	6,46	1
560/225	OE56022511	370	200	6,46	1
630/225	OE63022511	370	200	7,25	1
710/225	OE71022511	370	200	6,65	1
800/225	OE80022511	374	200	7,52	1
900/225	OE90022511	374	200	7,52	1
1000/225	OE91022511	374	200	7,52	1

More sizes available on request



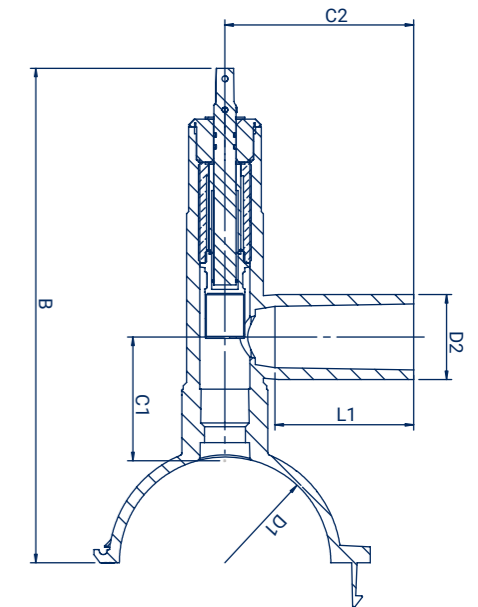
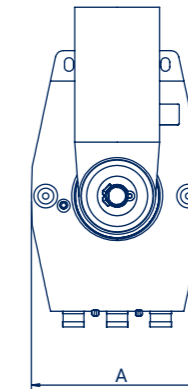
FOXGRIP L
CLAMPING TOOL

Code FSGRIP L



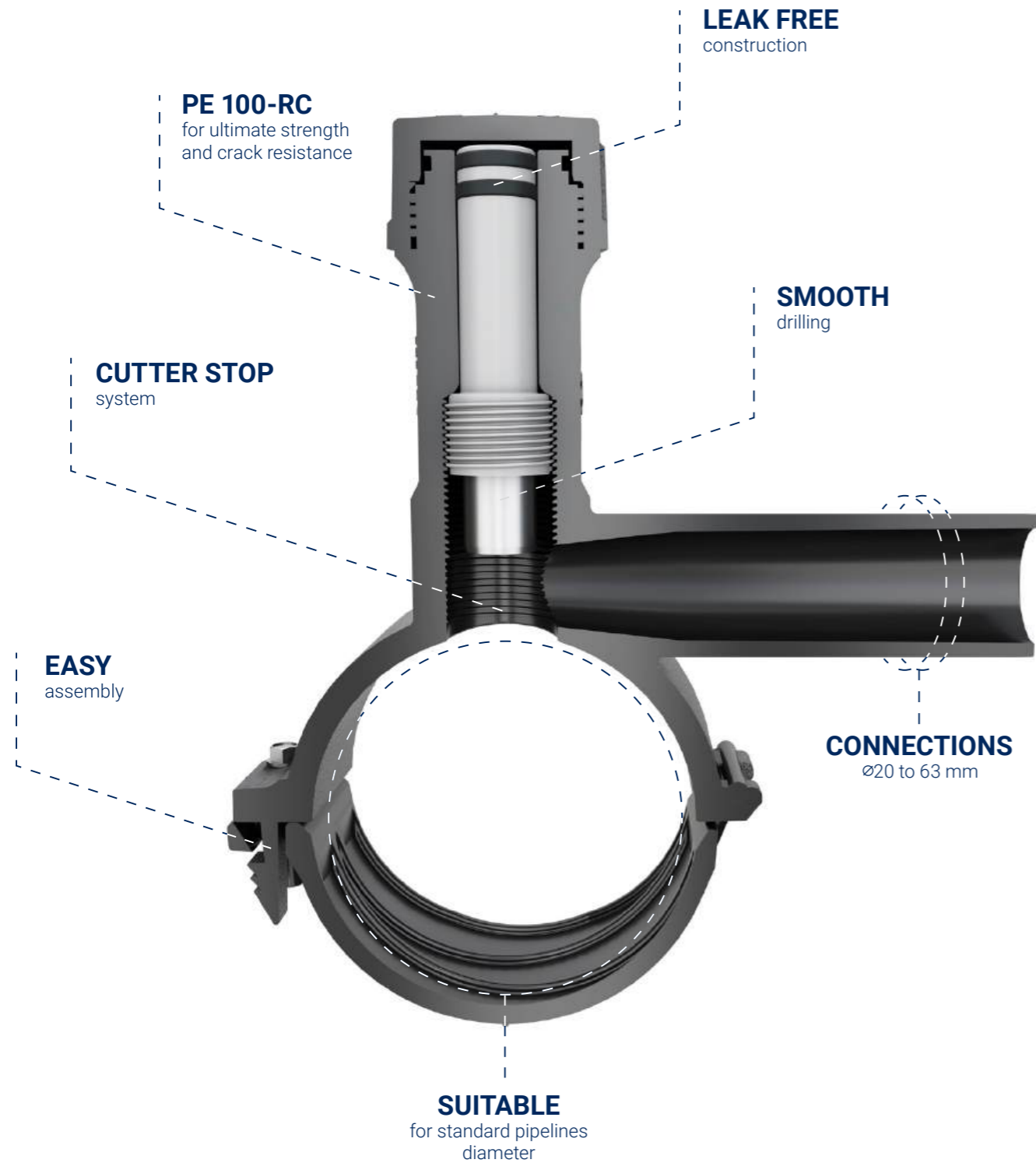
TAPPING VALVE

SDR 11

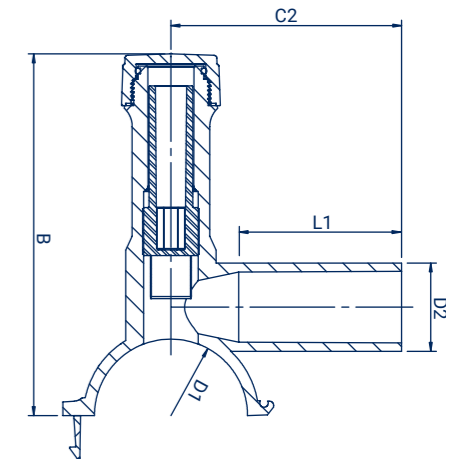
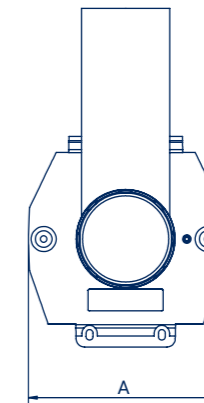


Size D1/D2 (mm)	Code	A (mm)	B (mm)	C2 (mm)	L1 (mm)	C1 (mm)	Weight (kg)	Assembly	Packing
63/32	ZNF06303211	126	320	140	86	87	1,52	PE detail	12
63/63	ZNF06306311	126	320	140	99	87	1,65	PE detail	12
75/32	ZNF07503211	126	320	140	86	87	1,57	PE detail	12
75/63	ZNF07506311	126	320	140	99	87	1,70	PE detail	12
90/32	ZNF09003211	128	320	140	86	87	1,68	PE detail	12
90/63	ZNF09006311	128	335	140	99	87	1,81	PE detail	12
110/32	ZNF11003211	126	346	140	86	87	1,56	PE detail	15
110/63	ZNF11006311	126	346	140	100	87	1,95	PE detail	10
125/32	ZNF12503211	126	346	140	86	88	1,83	PE detail	8
125/63	ZNF12506311	126	346	140	99	89	1,87	PE detail	8
140/32	ZNF14003211	128	340	140	86	87	1,88	PE detail	10
140/63	ZNF14006311	128	340	140	99	87	1,90	PE detail	10
160/32	ZNF16003211	128	380	140	86	89	2,20	PE detail	8
160/63	ZNF16006311	128	380	140	99	89	1,80	PE detail	10
180/32	ZNF18003211	190	365	140	86	85	2,45	PE detail	8
180/63	ZNF18006311	190	365	140	99	85	2,51	PE detail	8
200/32	ZNF20003211	170	340	140	86	87	2,57	Belt	8
200/63	ZNF20006311	170	340	140	99	87	2,62	Belt	8
225/32	ZNF22503211	170	340	140	86	90	2,79	Belt	8
225/63	ZNF22506311	170	340	140	99	90	2,13	Belt	8
250/32	ZNF25003211	170	340	140	86	87	2,84	Belt	8
250/63	ZNF25006311	170	340	140	99	87	2,89	Belt	8

SEE ALSO: Valve stem wrench - page 41, 42



TAPPING TEE SDR 11



Size D1/D2 (mm)	Code	A (mm)	B (mm)	C2 (mm)	L1 (mm)	C1 (mm)	Weight (kg)	Assembly	Hex key	Packing
40/20	TS04002011	127	167	130	103	15	0,38	PE detail	12	20
40/25	TS04002511	127	167	133	103	15	0,39	PE detail	12	18
40/32	TS04003211	127	167	147	120	15	0,40	PE detail	12	18
50/20	TS05002011	127	160	130	104	15	0,40	PE detail	12	18
50/25	TS05002511	127	162	132	104	12	0,40	PE detail	12	15
50/32	TS05003211	127	162	147	118	12	0,42	PE detail	12	18
50/40	TS05004011	127	161	146	115	12	0,44	PE detail	12	18
63/20	TS06302011	128	170	94	68	15	0,41	PE detail	12	20
63/25	TS06302511	128	170	95	68	15	0,41	PE detail	12	18
63/32	TS06303211	128	189	149	107	15	0,41	PE detail	12	18
63/40	TS06304011	128	170	105	73	15	0,44	PE detail	12	18
63/50	TS06305011	127	227	137	106	89	0,86	PE detail	17	12
63/63	TS06306311	126	227	139	111	75	0,75	PE detail	17	12
75/20	TS07502011	128	173	130	104	15	0,45	PE detail	12	15
75/25	TS07502511	128	173	131	101	15	0,45	PE detail	12	15
75/32	TS07503211	128	173	145	113	15	0,46	PE detail	12	14
75/40	TS07504011	128	173	145	109	15	0,49	PE detail	12	12
75/50	TS07505011	127	227	138	108	88	0,72	PE detail	17	12
75/63	TS07506311	127	226	136	98	90	0,98	PE detail	17	10
90/20	TS09002011	128	171	132	102	15	0,48	PE detail	12	20
90/25	TS09002511	128	179	130	98	15	0,48	PE detail	12	24
90/32	TS09003211	128	175	145	109	15	0,49	PE detail	12	25
90/40	TS09004011	128	175	145	107	15	0,51	PE detail	12	20
90/50	TS09005011	126	240	138	107	87	1,05	PE detail	17	15
90/63	TS09006311	126	240	137	98	87	0,90	PE detail	17	15
110/20	TS11002011	128	189	130	99	15	0,52	PE detail	12	20
110/25	TS11002511	128	189	145	96	16	0,54	PE detail	12	20
110/32	TS11003211	128	189	149	106	16	0,54	PE detail	12	20
110/40	TS11004011	128	189	145	102	16	0,56	PE detail	12	20
110/50	TS11005011	129	251	137	105	87	1,18	PE detail	17	15
110/63	TS11006311	126	248	137	98	88	0,80	PE detail	17	16

Size D1/D2 (mm)	Code	A (mm)	B (mm)	C2 (mm)	L1 (mm)	C1 (mm)	Weight (kg)	Assembly	Hex key	Packing
125/20	TS12502011	128	195	131	98	15	0,55	PE detail	12	20
125/25	TS12502511	128	195	131	93	15	0,55	PE detail	12	20
125/32	TS12503211	128	195	145	103	15	0,50	PE detail	12	15
125/40	TS12504011	128	195	148	99	15	0,58	PE detail	12	15
125/50	TS12505011	126	250	136	109	88	0,97	PE detail	17	12
125/63	TS12506311	126	250	136	98	88	1,03	PE detail	17	12
140/20	TS14002011	128	246	138	78	88	0,99	PE detail	17	20
140/25	TS14002511	129	247	138	85	88	0,81	PE detail	17	20
140/32	TS14003211	128	246	138	85	88	0,97	PE detail	17	20
140/40	TS14004011	128	246	138	85	88	1,00	PE detail	17	15
140/50	TS14005011	128	248	137	106	88	1,03	PE detail	17	15
140/63	TS14006311	129	248	137	98	88	0,91	PE detail	17	15
160/20	TS16002011	128	272	138	78	89	0,82	PE detail	17	12
160/25	TS16002511	128	272	138	85	89	0,82	PE detail	17	12
160/32	TS16003211	128	272	138	85	89	0,83	PE detail	17	12
160/40	TS16004011	128	272	138	106	89	0,83	PE detail	17	12
160/50	TS16005011	128	272	137	106	89	1,37	PE detail	17	8
160/63	TS16006311	128	272	136	93	89	1,50	PE detail	17	8
180/20	TS18002011	190	264	138	85	82	1,33	PE detail	17	8
180/25	TS18002511	190	267	138	85	82	1,55	PE detail	17	8
180/32	TS18003211	189	265	138	85	82	1,53	PE detail	17	8
180/40	TS18004011	189	261	138	107	82	1,54	PE detail	17	8
180/50	TS18005011	189	265	137	107	82	1,61	PE detail	17	8
180/63	TS18006311	189	265	136	98	82	1,46	PE detail	17	8
200/20	TS20002011	168	247	138	85	88	1,23	Belt	17	10
200/25	TS20002511	168	247	138	85	88	1,12	Belt	17	10
200/32	TS20003211	168	247	138	85	88	1,14	Belt	17	10
200/40	TS20004011	170	247	138	107	88	1,34	Belt	17	10
200/50	TS20005011	169	245	137	106	88	1,17	Belt	17	10
200/63	TS20006311	170	247	136	98	88	1,45	Belt	17	10
225/20	TS22502011	170	248	139	85	88	1,35	Belt	17	10
225/25	TS22502511	170	248	139	85	88	1,13	Belt	17	10
225/32	TS22503211	170	247	138	85	88	1,35	Belt	17	10
225/40	TS22504011	170	245	140	111	90	1,35	Belt	17	10
225/50	TS22505011	169	246	137	107	88	1,35	Belt	17	10
225/63	TS22506311	170	244	136	98	88	1,47	Belt	17	10
250/20	TS25002011	169	245	138	85	87	1,38	Belt	17	10
250/25	TS25002511	169	245	138	85	87	1,19	Belt	17	10
250/32	TS25003211	169	245	138	85	87	1,35	Belt	17	10
250/40	TS25004011	169	245	138	106	88	1,20	Belt	17	10
250/50	TS25005011	168	245	137	109	88	1,42	Belt	17	10
250/63	TS25006311	169	245	136	98	88	1,50	Belt	17	10
280/20	TS28002011	169	244	138	84	86	1,33	Belt	17	10
280/25	TS28002511	169	244	138	84	86	1,33	Belt	17	10
280/32	TS28003211	169	244	138	84	86	1,41	Belt	17	10
280/40	TS28004011	169	244	136	98	88	1,42	Belt	17	10
280/50	TS28005011	169	244	136	98	88	1,42	Belt	17	10
280/63	TS28006311	169	244	136	98	88	1,31	Belt	17	10
315/20	TS31502011	170	247	140	86	87	1,37	Belt	17	10
315/25	TS31502511	170	247	140	86	87	1,37	Belt	17	10
315/32	TS31503211	170	247	140	86	87	1,23	Belt	17	10
315/40	TS31504011	169	244	136	98	88	1,42	Belt	17	10
315/50	TS31505011	169	244	136	98	88	1,49	Belt	17	10
315/63	TS31506311	169	244	136	98	88	1,54	Belt	17	10

SEE ALSO: Tapping tee wrench - page 42



REPAIRING CLAMP WITH BILATERAL HEATING ZONE SDR 11



water
16 bar



gas
10 bar



hydrogen
10 bar



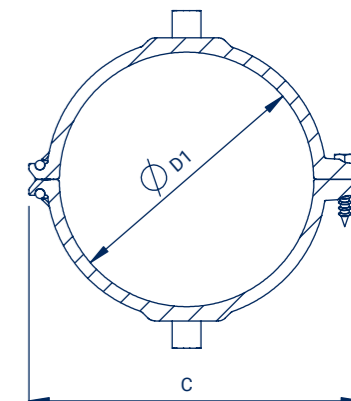
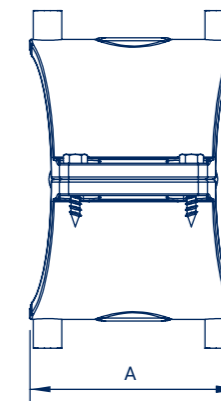
PE 100-RC
material



MRS 10 MPa



center welding
zones



Size D1 (mm)	Code	A (mm)	C (mm)	Weight (kg)	Packing
63	OND06311	115	109	0,33	45
75	OND07511	117	123	0,38	30
90	OND09011	128	138	0,50	30
110	OND11011	128	162	0,56	20
125	OND12511	128	170	0,63	20
140	OND14011	127	180	0,54	20
160	OND16011	130	230	0,81	15
180	OND18011	130	239	0,97	12
200	OND20011	169	239	1,36	10
225	OND22511	169	239	1,38	10
250	OND25011	169	265	1,47	10
280	OND28011	169	267	1,46	10
315	OND31511	169	290	1,57	10



EQUAL EF TEE SDR 11



water
16 bar



gas
10 bar



hydrogen
10 bar



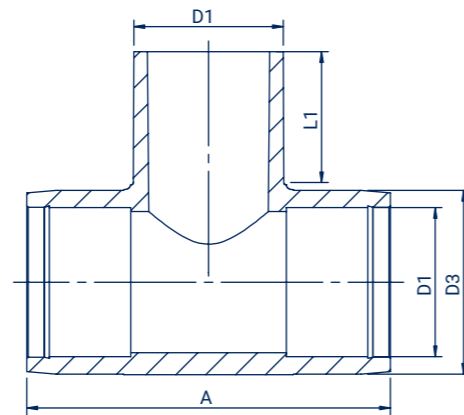
PE 100-RC
material



MRS 10 MPa



center
stop



Size D1 (mm)	Code	A (mm)	D3 (mm)	L1 (mm)	Weight (kg)	Packing
20	TE02011	107	37	48	0,09	150
25	TE02511	108	37	44	0,08	140
32	TE03211	108	45	44	0,11	90
40	TE04011	108	58	50	0,18	50
50	TE05011	145	66	74	0,252	30
63	TE06311	164	80	77	0,37	20
75	TE07511	225	96	82	0,73	12
90	TE09011	244	112	88	1,01	7
110	TE11011	267	136	96	1,50	10
125	TE12511	285	152	101	2,05	6
160	TE16011	351	193	114	3,86	3
180	TE18011	390	223	112	5,87	3



REDUCED EF TEE SDR 11



water
16 bar



gas
10 bar



hydrogen
10 bar



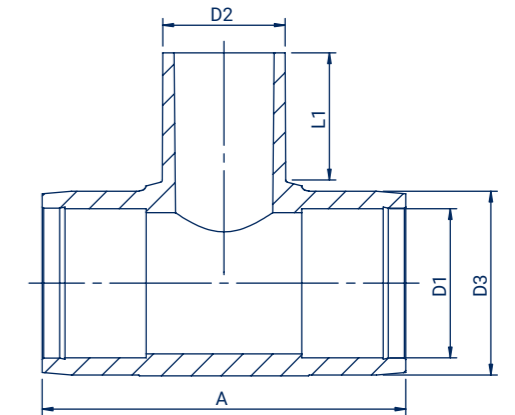
PE 100-RC
material



MRS 10 MPa



center
stop



Size D1/D2 (mm)	Code	A (mm)	D3 (mm)	L1 (mm)	Weight (kg)	Packing
25/20	TE02502011	108	37	48	0,08	140
32/20	TE03202011	108	45	45	0,11	90
32/25	TE03202511	108	45	56	0,11	90
40/25	TE04002511	107	58	41	0,17	60
40/32	TE04003211	107	58	45	0,17	60
50/25	TE05002511	145	66	58	0,22	40
50/32	TE05003211	145	66	58	0,22	40
50/40	TE05004011	145	66	58	0,23	30
63/32	TE06303211	164	80	77	0,32	25
63/40	TE06304011	164	80	77	0,33	25
63/50	TE06305011	164	80	77	0,34	25
75/63	TE07506311	224	95	78	0,71	12
90/63	TE09006311	244	113	82	1,00	8
90/75	TE09007511	244	113	82	1,00	8
110/63	TE11006311	267	137	86	1,52	10
110/75	TE11007511	266	137	86	1,50	10
110/90	TE11009011	265	137	88	1,50	10
125/63	TE12506311	285	151	102	1,70	8
125/75	TE12507511	285	152	104	1,80	6
125/90	TE12509011	285	152	102	1,80	8
125/110	TE12511011	284	152	101	1,90	6
160/63	TE16006311	348	193	114	3,10	4
160/75	TE16007511	350	194	116	3,30	4
160/90	TE16009011	349	193	115	3,20	4
160/110	TE16011011	349	193	113	3,57	4
160/125	TE16012511	351	194	114	3,60	4
180/125	TE18012511	389	223	105	5,38	3



EQUAL EF TEE BHZ SDR 11



water
16 bar



gas
10 bar



hydrogen
10 bar



PE 100-RC
material



10 MPa



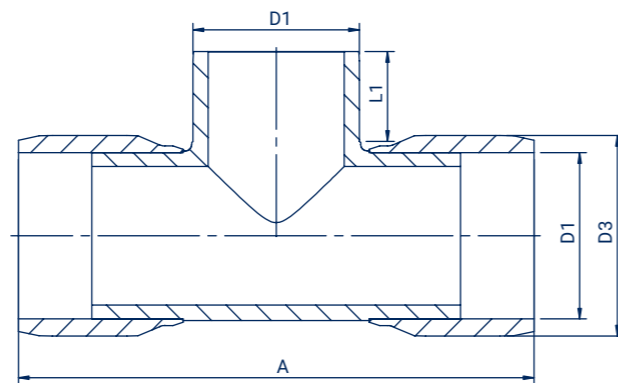
center
stop



ready
to use



bilateral heating
zones



Size D1 (mm)	Code	A (mm)	D3 (mm)	L1 (mm)	Weight (kg)	Packing
140	TED14011	576	168	104	5,40	2
200	TED20011	660	238	124	12,25	1
225	TED22511	728	271	129	16,11	1
250	TED25011	790	299	135	22,00	1
280	TED28011	857	336	146	42,30	1
315	TED31511	923	379	153	42,30	1
355	TED35511	1 125	425	167	57,00	1
400	TED40011	1 217	476	198	72,80	1
450	TED45011	1 274	537	198	116,00	1
500	TED50011	1 428	600	218	154,00	1



REDUCED EF TEE BHZ SDR 11



water
16 bar



gas
10 bar



hydrogen
10 bar



PE 100-RC
material



10 MPa



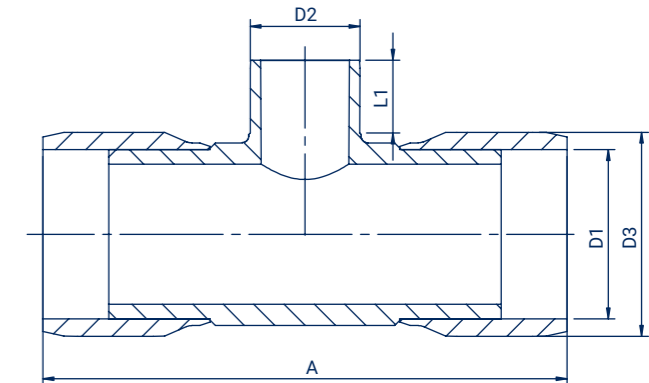
center
stop



ready
to use



bilateral heating
zones



Size D1 (mm)	Code	A (mm)	D3 (mm)	L1 (mm)	Weight (kg)	Packing
200/90	TED20009011	741	238	96	11,52	1
200/110	TED20011011	696	238	86	11,41	1
200/160	TED20016011	691	238	101	11,74	1
225/90	TED22509011	665	266	79	15,88	1
225/110	TED22511011	671	266	85	16,33	1
225/160	TED22516011	709	266	98	15,70	1
250/110	TED25011011	790	299	90	17,00	1
250/160	TED25016011	790	299	107	18,56	1
315/110	TED31511011	922	379	90	32,21	1
315/160	TED31516011	923	379	106	38,06	1
315/250	TED31525011	931	379	150	39,00	1



ELECTROFUSION END CAP SDR 11



water
16 bar



gas
10 bar



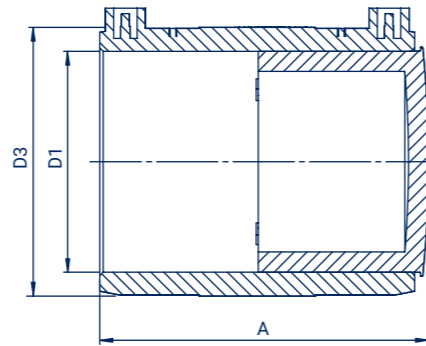
hydrogen
10 bar



PE 100-RC
material



MRS 10 MPa



Size D1 (mm)	Code	A (mm)	D3 (mm)	Weight (kg)	Packing
20	ZE02011	88	36	0,07	200
25	ZE02511	88	36	0,07	200
32	ZE03211	88	43	0,08	180
40	ZE04011	96	53	0,11	150
50	ZE05011	97	64	0,15	90
63	ZE06311	118	79	0,23	50
75	ZE07511	139	97	0,49	30
90	ZE09011	154	112	0,62	18
110	ZE11011	164	134	1,07	12
125	ZE12511	170	152	1,30	18
140	ZE14011	179	168	1,85	14
160	ZE16011	178	195	2,43	12
180	ZE18011	260	213	3,19	4
200	ZE20011	275	238	4,00	3
225	ZE22511	314	266	5,85	2
250	ZE25011	331	295	6,71	2
280	ZE28011	363	336	10,11	2
315	ZE31511	386	379	14,21	1
355	ZE35511	439	425	19,29	2
400	ZE40011	470	476	27,00	1
450	ZE45011	325	537	40,65	1
500	ZE50011	383	600	55,54	1



ELECTROFUSION ELBOW 90° SDR 11



water
16 bar



gas
10 bar



hydrogen
10 bar



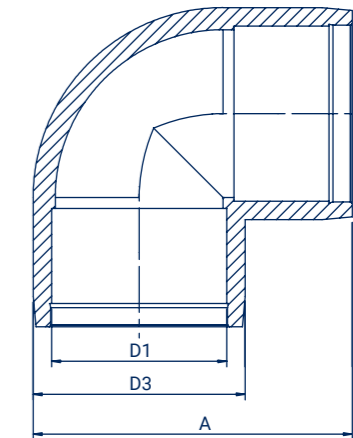
PE 100-RC
material



MRS 10 MPa



center
stop



Size D1 (mm)	Code	A (mm)	D3 (mm)	Weight (kg)	Packing
20	KE9002011	79	34	0,05	200
25	KE9002511	80	35	0,05	150
32	KE9003211	83	43	0,07	120
40	KE9004011	94	52	0,11	80
50	KE9005011	105	62	0,17	50
63	KE9006311	126	80	0,28	30
75	KE9007511	159	95	0,50	15
90	KE9009011	178	112	0,77	10
110	KE9011011	200	135	1,10	8
125	KE9012511	226	151	1,55	10
140	KE9014011	245	170	2,01	6
160	KE9016011	275	194	3,01	4



ELECTROFUSION ELBOW 45°

SDR 11



water
16 bar



gas
10 bar



hydrogen
10 bar



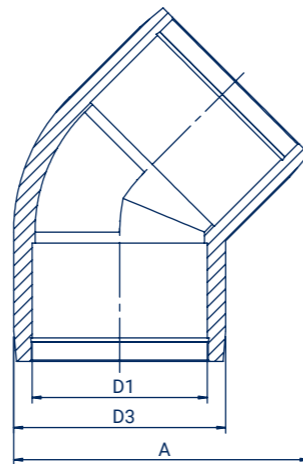
PE 100-RC
material



MRS 10 MPa



center
stop



Size D1 (mm)	Code	A (mm)	D3 (mm)	Weight (kg)	Packing
20	KE4502011	65	35	0,06	200
25	KE4502511	65	35	0,05	180
32	KE4503211	72	42	0,07	160
40	KE4504011	84	53	0,10	90
50	KE4505011	97	67	0,18	60
63	KE4506311	114	81	0,23	35
75	KE4507511	140	93	0,47	20
90	KE4509011	160	112	0,64	12
110	KE4511011	185	135	0,94	8
125	KE4512511	208	151	1,20	10
140	KE4514011	225	170	1,61	6
160	KE4516011	253	195	2,33	6



ELECTROFUSION ELBOW BHZ 90°

SDR 11



water
16 bar



gas
10 bar



hydrogen
10 bar



PE 100-RC
material



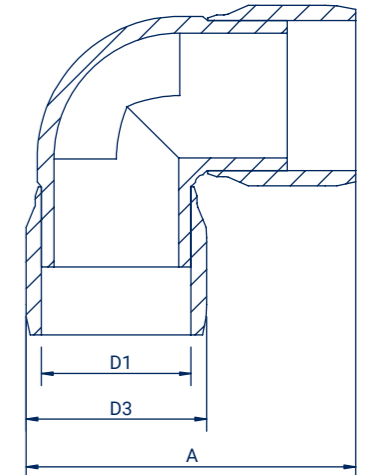
MRS 10 MPa



ready
to use



bilateral heating
zones

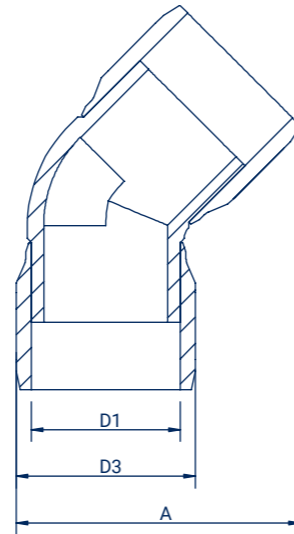


Size D1 (mm)	Code	A (mm)	D3 (mm)	Weight (kg)	Packing
140	KED9014011	372	168	2,01	6
180	KED9018011	412	213	7,00	1
200	KED9020011	448	238	9,20	1
225	KED9022511	496	266	12,71	2
250	KED9025011	540	299	17,80	1
280	KED9028011	570	336	26,40	1
315	KED9031511	645	379	35,00	1
355	KED9035511	893	425	69,80	1
400	KED9040011	1 370	476	95,50	1
450	KED9045011	1 074	537	139,00	1
500	KED9050011	1 199	600	145,00	1



ELECTROFUSION ELBOW BHZ 45°

SDR 11

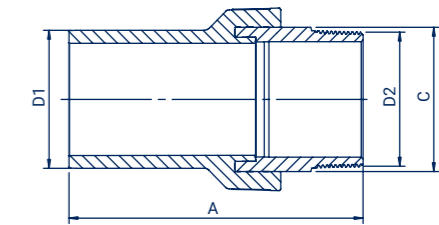


Size D1 (mm)	Code	A (mm)	D3 (mm)	Weight (kg)	Packing
180	KED4518011	355	213	6,70	2
200	KED4520011	383	238	8,79	1
225	KED4522511	430	266	10,80	2
250	KED4525011	480	299	16,00	1
280	KED4528011	500	336	21,94	1
315	KED4531511	551	379	29,95	1
355	KED4535511	912	425	65,00	1
400	KED4540011	989	476	76,50	1
450	KED4545011	1 069	537	119,00	1
500	KED4550011	1 200	600	156,00	1



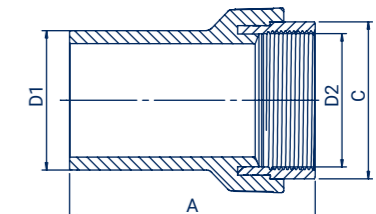
PE / BRASS TRANSITION

SDR 11



MALE THREAD |

Size D1/D2 (mm)	Code	C (mm)	A (mm)	Weight (kg)	Packing
20 x 1/2"	AGZ020012	22	91	0,08	220
25 x 3/4"	AGZ025034	28	93	0,12	200
32 x 1"	AGZ032001	34	102	0,17	140
40 x 1"	AGZ040001	34	107	0,16	140
40 x 1 1/4"	AGZ040114	44	113	0,28	100
50 x 1 1/2"	AGZ050112	49	123	0,36	70
63 x 2"	AGZ063002	61	139	0,67	40
75 x 2 1/2"	AGZ075212	76	158	0,96	25
90 x 3"	AGZ090003	88	175	1,40	18
110 x 4"	AGZ110004	114	196	2,35	8
125 x 4"	AGZ125004	114	196	2,44	6



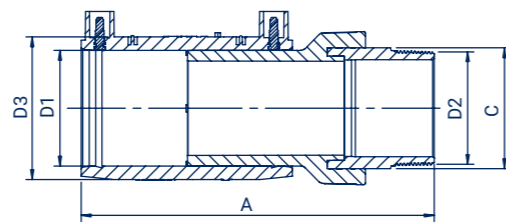
FEMALE THREAD |

Size D1/D2 (mm)	Code	C (mm)	A (mm)	Weight (kg)	Packing
20 x 1/2"	AGW020012	26	77	0,07	200
25 x 3/4"	AGW025034	32	78	0,09	60
32 x 1"	AGW032001	40	83	0,14	200
40 x 1"	AGW040001	40	88	0,16	140
40 x 1 1/4"	AGW040114	48	96	0,20	100
50 x 1 1/2"	AGW050112	55	103	0,29	84
63 x 2"	AGW063002	67	115	0,41	50
75 x 2 1/2"	AGW075212	83	130	0,65	32
90 x 3"	AGW090003	96	147	1,02	20
110 x 4"	AGW110004	122	160	1,50	8
125 x 4"	AGW125004	122	160	1,59	6

ELECTROFUSION COUPLER WITH BRASS TRANSITION SDR 11

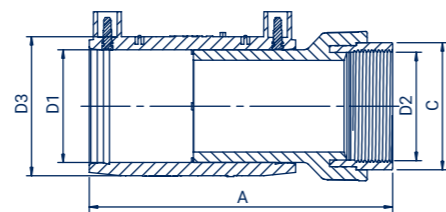


MALE THREAD |



Size D1/D2 (mm)	Code	C (mm)	D3 (mm)	A (mm)	Weight (kg)	Packing
20 x 1/2"	MGZ020012	22	35	134	0,13	54
25 x 3/4"	MGZ025034	28	36	136	0,17	100
32 x 1"	MGZ032001	34	43	145	0,24	100
40 x 1"	MGZ040001	34	53	154	0,36	40
40 x 1 1/4"	MGZ040114	44	53	160	0,35	60
50 x 1 1/2"	MGZ050112	49	64	170	0,47	40
63 x 2"	MGZ063002	61	79	197	0,85	30
75 x 2 1/2"	MGZ075212	76	96	226	1,31	10
90 x 3"	MGZ090003	88	112	250	1,87	10
110 x 4"	MGZ110004	114	134	276	3,05	6
125 x 4"	MGZ125004	114	152	280	3,34	6

FEMALE THREAD |

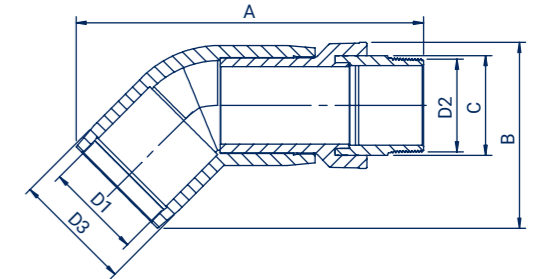


Size D1/D2 (mm)	Code	C (mm)	D3 (mm)	A (mm)	Weight (kg)	Packing
20 x 1/2"	MGW020012	26	35	120	0,13	54
25 x 3/4"	MGW025034	32	36	121	0,14	50
32 x 1"	MGW032001	40	43	126	0,19	35
40 x 1"	MGW040001	40	53	135	0,24	100
40 x 1 1/4"	MGW040114	48	53	143	0,28	60
50 x 1 1/2"	MGW050112	55	64	150	0,39	50
63 x 2"	MGW063002	67	79	173	0,59	30
75 x 2 1/2"	MGW075212	83	96	198	1,00	10
90 x 3"	MGW090003	96	112	222	1,47	10
110 x 4"	MGW110004	122	134	239	2,20	8
125 x 4"	MGW125004	122	152	244	2,49	6

ELECTROFUSION ELBOW 45° WITH BRASS TRANSITION SDR 11

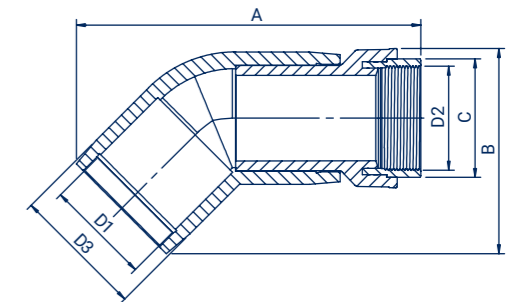


MALE THREAD |



Size D1/D2 (mm)	Code	C (mm)	D3 (mm)	A (mm)	B (mm)	Weight (kg)	Packing
20 x 1/2"	KGZ45020012	22	35	147	67	0,15	36
25 x 3/4"	KGZ45025034	28	37	150	71	0,14	30
32 x 1"	KGZ45032001	34	44	163	78	0,25	20
40 x 1"	KGZ45040001	34	56	177	86	0,33	12
40 x 1 1/4"	KGZ45040114	44	56	184	88	0,42	12
50 x 1 1/2"	KGZ45050112	49	67	201	97	0,54	10
63 x 2"	KGZ45063002	61	81	231	115	0,94	10
75 x 2 1/2"	KGZ45075212	76	93	272	142	1,37	8
90 x 3"	KGZ45090003	88	112	306	165	2,03	6
110 x 4"	KGZ45110004	114	135	344	189	3,29	5
125 x 4"	KGZ45125004	114	151	263	210	3,64	4

FEMALE THREAD |

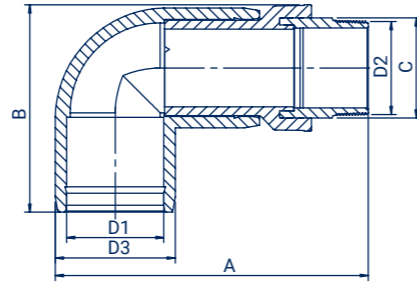


Size D1/D2 (mm)	Code	C (mm)	D3 (mm)	A (mm)	B (mm)	Weight (kg)	Packing
20 x 1/2"	KGW45020012	26	35	133	67	0,14	35
25 x 3/4"	KGW45025034	32	37	135	71	0,15	40
32 x 1"	KGW45032001	40	44	145	78	0,22	25
40 x 1"	KGW45040001	40	56	159	86	0,29	14
40 x 1 1/4"	KGW45040114	48	56	167	89	0,34	14
50 x 1 1/2"	KGW45050112	55	67	181	98	0,46	10
63 x 2"	KGW45063002	67	81	207	116	0,68	15
75 x 2 1/2"	KGW45075212	83	93	245	145	1,06	8
90 x 3"	KGW45090003	96	112	278	165	1,65	8
110 x 4"	KGW45110004	122	135	308	189	2,44	5
125 x 4"	KGW45125004	122	151	327	210	2,79	4

ELECTROFUSION ELBOW 90° WITH BRASS TRANSITION SDR 11

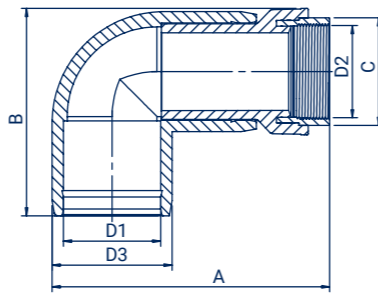
- water 16 bar
- gas 10 bar
- hydrogen 10 bar
- PE 100-RC material
- MRS 10 MPa
- threads according to EN10266-1

MALE THREAD |



Size D1/D2 (mm)	Code	C (mm)	D3 (mm)	A (mm)	B (mm)	Weight (kg)	Packing
20 x 1/2"	KGZ90020012	22	34	126	81	0,15	36
25 x 3/4"	KGZ90025034	28	35	129	85	0,14	30
32 x 1"	KGZ90032001	34	43	146	88	0,24	20
40 x 1"	KGZ90040001	34	52	160	94	0,30	12
40 x 1 1/4"	KGZ90040114	44	52	166	99	0,39	12
50 x 1 1/2"	KGZ90050112	49	62	186	108	0,51	8
63 x 2"	KGZ90063002	61	80	220	127	0,96	14
75 x 2 1/2"	KGZ90075212	76	95	254	162	1,46	8
90 x 3"	KGZ90090003	88	112	288	180	2,17	6
110 x 4"	KGZ90110004	114	135	332	203	3,45	4
125 x 4"	KGZ90125004	114	151	348	225	3,99	3

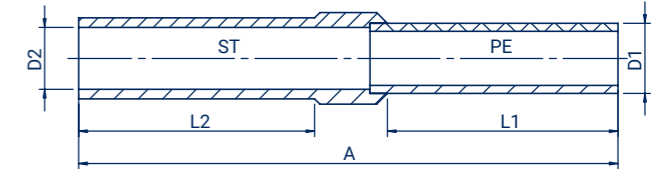
FEMALE THREAD |



Size D1/D2 (mm)	Code	C (mm)	D3 (mm)	A (mm)	B (mm)	Weight (kg)	Packing
20 x 1/2"	KGW90020012	26	34	114	81	0,14	40
25 x 3/4"	KGW90025034	32	35	116	85	0,15	30
32 x 1"	KGW90032001	40	43	127	88	0,21	25
40 x 1"	KGW90040001	40	52	141	94	0,26	15
40 x 1 1/4"	KGW90040114	48	52	149	99	0,31	14
50 x 1 1/2"	KGW90050112	55	62	166	108	0,43	12
63 x 2"	KGW90063002	67	80	196	127	0,70	14
75 x 2 1/2"	KGW90075212	83	95	226	162	1,15	8
90 x 3"	KGW90090003	96	112	260	180	1,79	8
110 x 4"	KGW90110004	122	135	296	203	2,60	5
125 x 4"	KGW90125004	122	151	312	225	3,14	4

PE / STEEL TRANSITION

- gas 10 bar
- MRS 10 MPa



Size D1/D2 (mm)	Code	A (mm)	L2 (mm)	L1 (mm)	Weight (kg)	Packing
25/20	PS025020	530	300	190	0,95	-
32/25	PS032025	531	300	190	0,99	-
40/32	PS040032	531	300	185	1,17	-
50/40	PS050040	530	300	182	1,24	-
63/50	PS063050	530	300	175	2,52	-
75/65	PS075065	567	300	200	2,68	-
90/80	PS090080	546	300	175	3,49	-
110/100	PS110100	579	300	200	8,61	-
125/100	PS125100	560	300	175	9,48	-
160/150	PS160150	590	300	195	12,10	-
180/150	PS180150	643	300	228	14,38	-
200/200	PS200200	665	300	245	21,21	-
225/200	PS225200	700	300	255	22,53	-
250/200	PS250200	830	400	280	35,70	-
250/250	PS250250	810	400	260	36,86	-
280/250	PS280250	870	400	280	40,40	-
315/250	PS315250	860	400	270	41,50	-
315/300	PS315300	890	400	300	42,21	-
355/300	PS355300	890	400	300	44,10	-



PE / STEEL TRANSITION INJECTED



water
16 bar



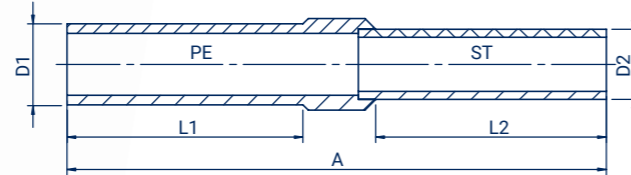
gas
10 bar



PE 100-RC
material



MRS 10 MPa

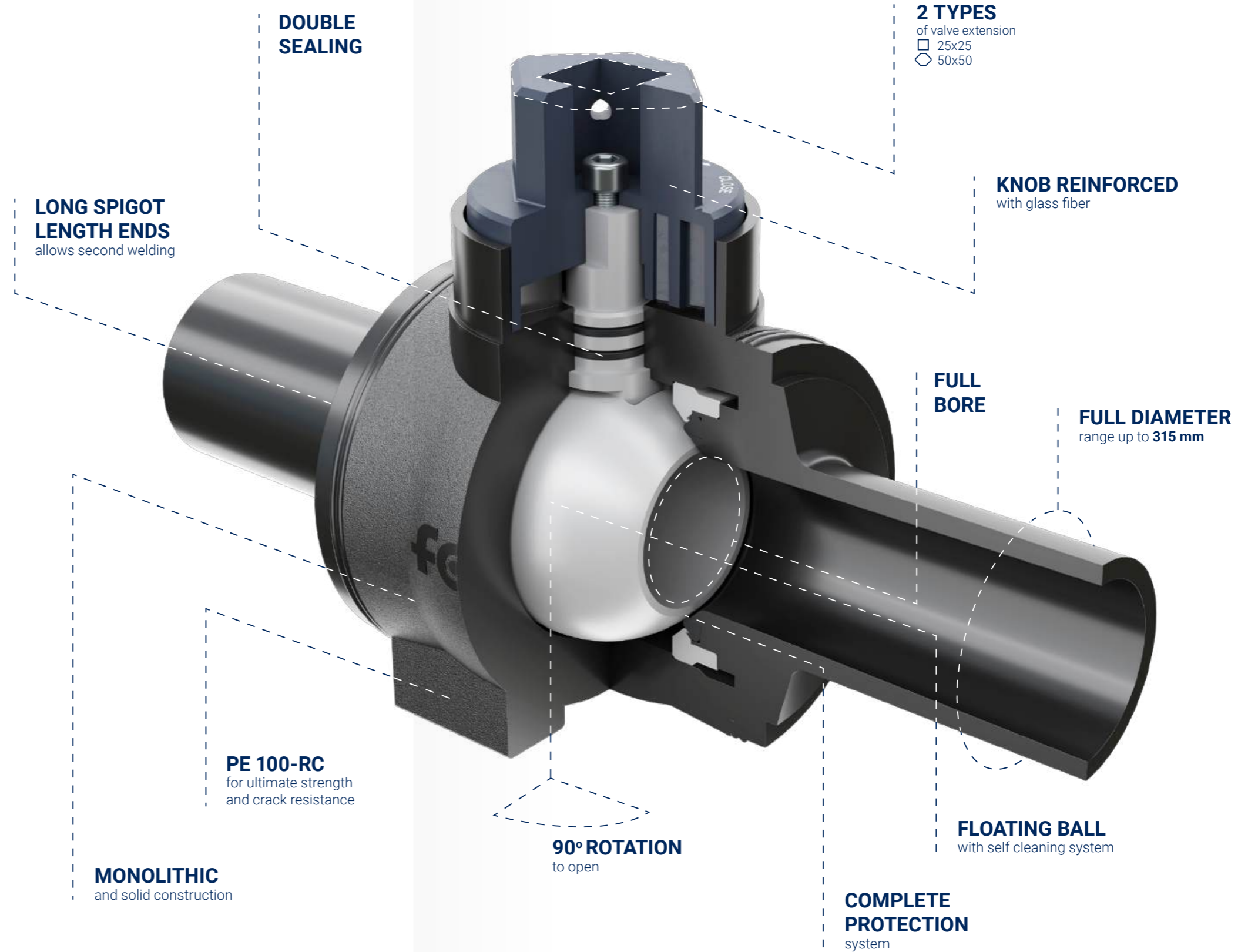


Size D1/D2 (mm)	Code	A (mm)	L2 (mm)	L1 (mm)	Weight (kg)	Packing
25/20	PS025020W	360	207	64	0,44	50
32/25	PS032025W	460	209	85	0,88	30
40/32	PS040032W	499	300	130	1,20	1
50/40	PS050040W	499	300	130	1,80	1
63/50	PS063050W	580	134	147	2,01	1



PE BALL VALVES

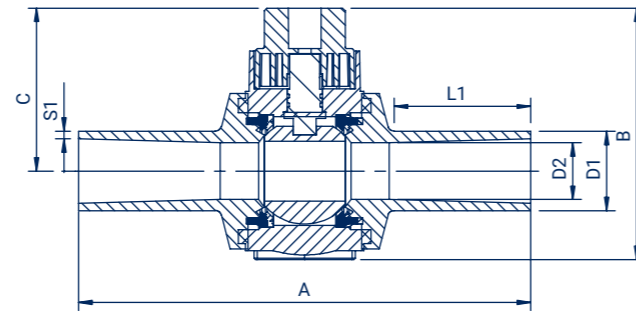
Polyethylene ball valves can be used in various industries, in all types of PE pipelines, properly to any type of liquid or gas medium. Produced in a wide range of sizes/dimensions, characterized by high resistance to corrosive and extended life span.





PE BALL-VALVE

- water
16 bar
- gas
10 bar
- hydrogen
10 bar
- PE 100-RC
material
- MRS
10 MPa
- rotate 90°
to open
- BVS
full bore
- BVR
reduced bore



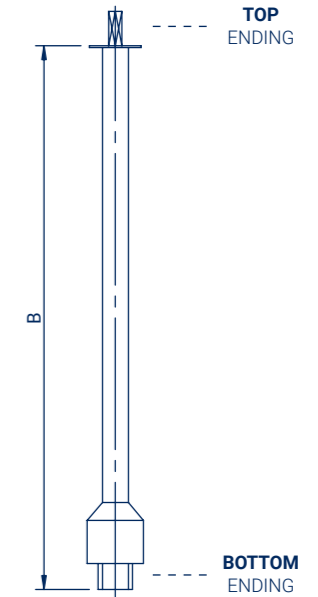
Size D1 (mm)	Code	A (mm)	B (mm)	C (mm)	L1 (mm)	S1 (mm)	Bore D2 (mm)	Weight (kg)	Packing
25	BVS02511	251	134	98	58	3	16	0,58	12
32	BVS03211	251	134	98	60	3	20	0,58	12
40	BVS04011	251	134	98	60	3,7	25	0,61	12
50	BVS05011	364	198	135	95	4,6	39	1,77	6
63	BVS06311	340	198	135	116	5,8	49	1,78	6
75	BVS07511	358	202	135	137	6,8	49	1,96	6
90	BVS09011	492	266	159	151	8,2	71	4,80	2
110	BVS11011	490	266	160	156	10	87	5,00	2
125	BVS12511	486	265	160	156	11,4	93	5,34	2
160	BVR16011	486	265	159	166	14,6	93	6,69	2
160	BVS16011	620	400	221	155	14,6	128	22,77	1
180	BVR18011	470	265	159	156	16,4	93	7,06	1
180	BVS18011	620	400	221	155	16,4	144	22,85	1
200	BVR20011	475	265	162	156	18,2	93	7,48	1
200	BVS20011	620	400	221	155	18,2	150	23,73	1
225	BVS22511	620	400	221	155	20,5	150	24,73	1
250	BVR25011	620	400	221	155	22,7	150	26,03	1
280	BVR28011	620	400	221	155	25,4	150	29,80	1
315	BVR31511	620	400	221	155	28,6	150	28,98	1

SEE ALSO: Valve stem wrench - page 41, 42



VALVE EXTENSION

- water
- gas
- hydrogen
- top quality



Code	B (mm)	Top ending	Bottom ending	For product	Weight (kg)
KZN060100S1F	600-1000			ZNF	1,55
KZN120200S1F	1200-2000			ZNF	2,60
KZP060100M1C	600-1000			BVS160-315 BVR250-315	3,74
KZP120200M1C	1200-2000			BVS160-315 BVR250-315	6,15
KZP060100S1B	600-1000			BVS025-125 BVR160-200	-
KZP120200S1B	1200-2000			BVS025-125 BVR160-200	-
KZP060100S1A	600-1000			BVS020-125 BVR160-200	1,74
KZP120200S1A	1200-2000			BVS020-125 BVR160-200	2,86



VALVE WRENCH



water



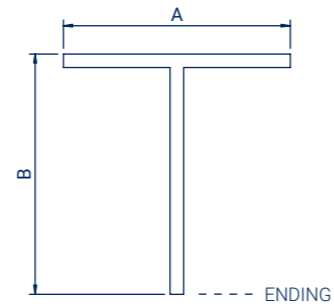
gas



hydrogen



top
quality



Code	A (mm)	B (mm)	Ending	For product	Weight (kg)
KEYBV	400	65	50	BVS025-125 BVR160-200	0,80
KEYKZPM	585	835	30	KZP060100M1C KZP120200M1C	2,95
KEYKZPS	600	320	15	KZN060100S1F KZN120200S1F KZP060100S1B KZP120200S1B KZP060100S1A KZP120200S1A	0,50
KEYTS12	300	257	12	TS	0,72
KEYTS17	300	257	17	TS	0,95
KEYTSFL17	350	425	17	TS	0,50
KEYZNF	500	255	14	ZNF	1,31

SPIGOT FITTINGS



Spigot fittings are available in a wide range of types and sizes. High-quality products provide a durable, leak-free piping system both in gas and water supply networks, as well as in other industrial installations.

**FOR SPIGOT
WELDING**

**FOR ELECTROFUSION
WELDING**

SUITABLE

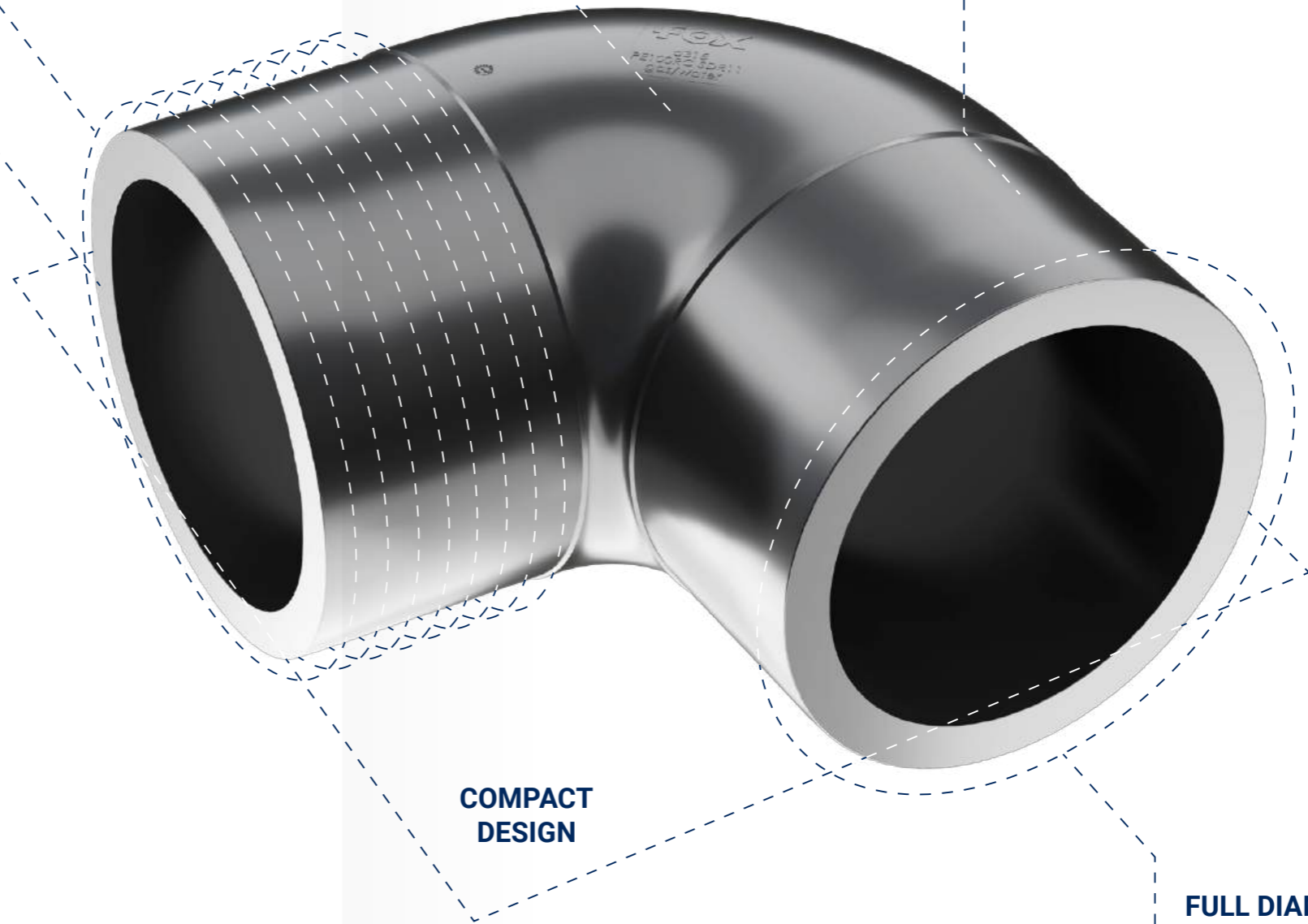
for gas, water, hydrogen,
compressed air, glycol systems

MOP

up to 16 bar

PE 100-RC

for ultimate strength
and crack resistance



**COMPACT
DESIGN**

FULL DIAMETER
range up to 315 mm



SPIGOT ELBOW 90° SDR 11



water
16 bar



gas
10 bar



hydrogen
10 bar



PE 100-RC
material



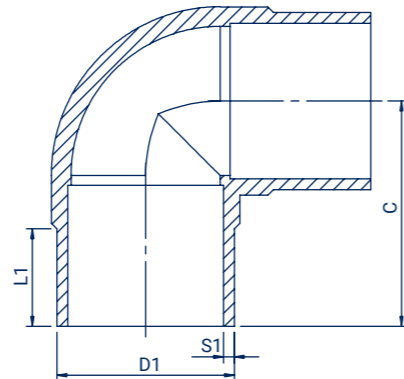
10 MPa



butt
welding



electrofusion
welding



Size D1 (mm)	Code	L1 (mm)	C (mm)	S1 (mm)	Weight (kg)	Packing
25	KD9002511	43	69	2,3	0,02	-
32	KD9003211	47	79	3	0,04	150
40	KD9004011	52	93	3,7	0,08	-
50	KD9005011	59	109	4,6	0,14	-
63	KD9006311	67	130	5,8	0,26	-
75	KD9007511	75	150	6,8	0,42	-
90	KD9009011	81	131	8,2	0,53	16
110	KD9011011	95	210	10	1,29	6
125	KD9012511	93	163	11,4	1,32	6
140	KD9014011	120	200	12,7	2,28	5
160	KD9016011	101	190	14,6	2,47	6
180	KD9018011	112	212	16,4	3,59	4
200	KD9020011	121	233	18,2	4,89	2
225	KD9022511	125	251	20,5	6,40	2
250	KD9025011	135	275	22,7	8,85	1
280	KD9028011	146	303	25,4	12,14	1
315	KD9031511	157	335	28,6	16,81	1



SPIGOT ELBOW 90° SDR 17



water
10 bar



gas
5 bar



hydrogen
5 bar



PE 100-RC
material



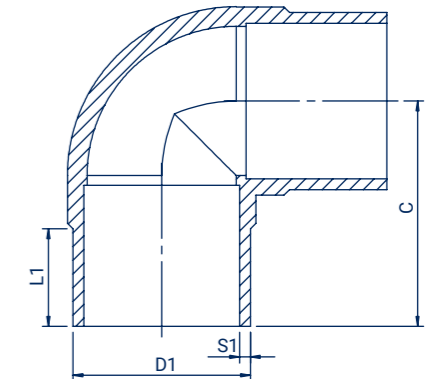
10 MPa



butt
welding



electrofusion
welding



Size D1 (mm)	Code	L1 (mm)	C (mm)	S1 (mm)	Weight (kg)	Packing
63	KD9006317	67	130	3,8	0,18	-
75	KD9007517	75	150	4,5	0,30	-
90	KD9009017	80	130	5,4	0,36	16
110	KD9011017	94	209	6,6	0,94	6
125	KD9012517	93	163	7,4	0,89	6
140	KD9014017	95	241	8,3	1,64	-
160	KD9016017	100	189	9,5	1,64	6
180	KD9018017	111	211	10,7	2,35	4
200	KD9020017	121	231	11,9	3,47	2
225	KD9022517	127	251	13,4	4,50	2
250	KD9025017	135	275	14,8	6,02	1
280	KD9028017	146	303	16,6	8,42	1
315	KD9031517	157	335	18,7	11,64	1



SPIGOT ELBOW 45° SDR 11



water
16 bar



gas
10 bar



hydrogen
10 bar



PE 100-RC
material



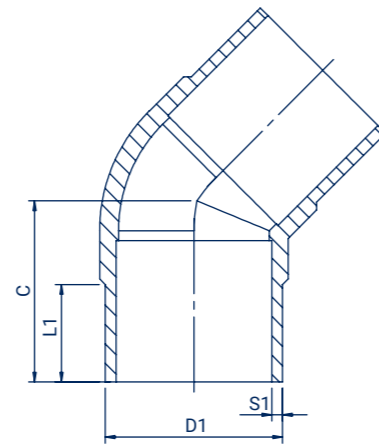
10 MPa



butt
welding



electrofusion
welding



Size D1 (mm)	Code	L1 (mm)	C (mm)	S1 (mm)	Weight (kg)	Packing
25	KD4502511	48	42	3	0,02	-
32	KD4503211	57	49	3	0,04	15
40	KD4504011	63	53	3,7	0,06	10
50	KD4505011	66,5	57	4,6	0,10	10
63	KD4506311	66	88	5,8	0,21	30
75	KD4507511	71	90	6,8	0,29	25
90	KD4509011	83	109	8,2	0,45	16
110	KD4511011	109	139	10	0,94	8
125	KD4512511	93	124	11,4	0,95	8
140	KD4514011	121	168	12,7	1,76	8
160	KD4516011	120	161	14,6	2,21	6
180	KD4518011	108	153	16,4	2,73	3
200	KD4520011	115	165	18,2	3,66	2
225	KD4522511	125	180	20,5	4,79	2
250	KD4525011	135	196	22,7	6,85	2
280	KD4528011	144	214	25,4	9,24	2
315	KD4531511	155	231	28,6	13,00	1



SPIGOT ELBOW 45° SDR 17



water
10 bar



gas
5 bar



hydrogen
5 bar



PE 100-RC
material



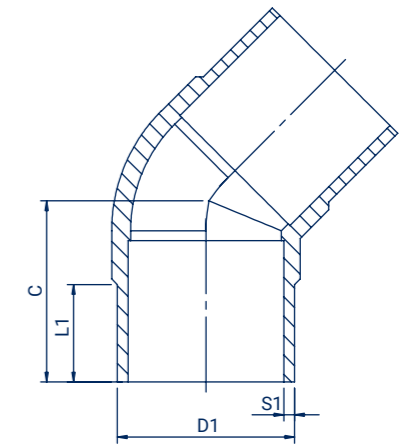
10 MPa



butt
welding



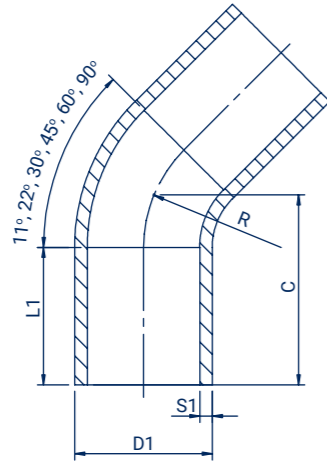
electrofusion
welding



Size D1 (mm)	Code	L1 (mm)	C (mm)	S1 (mm)	Weight (kg)	Packing
63	KD4506317	65	88	3,8	0,15	6
75	KD4507517	71	90	4,5	0,20	24
90	KD4509017	81	104	5,4	0,32	16
110	KD4511017	109	139	6,6	0,67	8
125	KD4512517	94	124	7,4	0,65	6
140	KD4514017	120	168	8,3	1,28	8
160	KD4516017	120	160	9,5	1,54	6
180	KD4518017	107	151	10,7	1,81	3
200	KD4520017	115	164	11,9	2,39	2
225	KD4522517	125	180	13,4	3,40	2
250	KD4525017	137	196	14,8	4,67	2
280	KD4528017	139	218	16,6	6,32	2
315	KD4531517	155	238	18,7	8,44	1



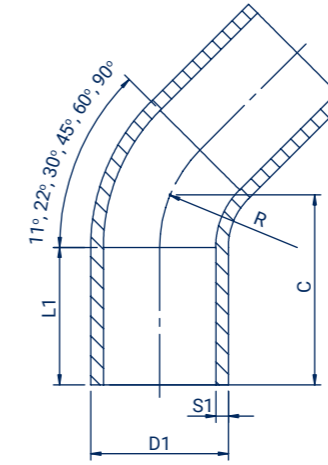
SEAMLESS BEND 11° SDR 11



Size D1 (mm)	Code	L1 (mm)	C (mm)	S1 (mm)	R (mm)	Weight (kg)	Packing
32	LU1103211	70	98	2,9	48	0,08	1
40	LU1104011	75	106	3,7	60	0,12	1
50	LU1105011	80	130	4,6	75	0,22	1
63	LU1106311	90	150	5,8	94,5	0,35	1
75	LU1107511	100	155	6,8	112,5	0,52	1
90	LU1109011	150	350	8,2	135	1,42	1
110	LU1111011	150	330	10	165	2,14	1
125	LU1112511	150	380	11,4	188	3,38	1
140	LU1114011	150	395	12,7	210	3,96	1
160	LU1116011	150	415	14,6	480	5,54	1
180	LU1118011	150	450	16,4	270	7,49	1
200	LU1120011	150	480	18,2	300	9,88	1
225	LU1122511	150	510	20,5	338	13,36	1
250	LU1125011	250	540	22,7	375	17,66	1
280	LU1128011	250	400	25,4	420	16,30	1
315	LU1131511	250	460	28,6	472,5	21,85	1
355	LU1135511	300	540	32,2	532,5	41,00	1
400	LU1140011	300	560	36,3	600	45,90	1
450	LU1145011	300	580	40,9	675	60,20	1
500	LU1150011	350	650	45,4	750	83,30	1
560	LU1156011	350	680	50,8	840	108,60	1
630	LU1163011	350	730	57,2	945	148,30	1



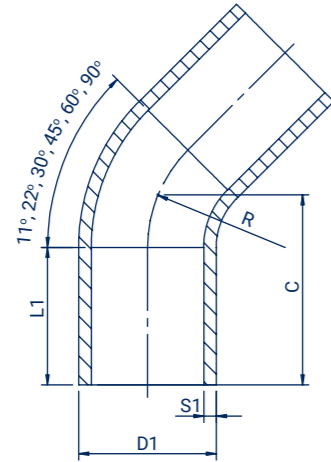
SEAMLESS BEND 11° SDR 17



Size D1 (mm)	Code	L1 (mm)	C (mm)	S1 (mm)	R (mm)	Weight (kg)	Packing
63	LU1106317	90	150	3,8	94,5	0,22	1
75	LU1107517	100	155	4,5	112,5	0,26	1
90	LU1109017	150	350	5,4	135	0,98	1
110	LU1111017	120	219	6,6	165	1,10	1
125	LU1112517	150	225	7,4	187,5	1,46	1
140	LU1114017	150	231	8,3	210	2,04	1
160	LU1116017	150	239	9,5	240	2,48	1
180	LU1118017	150	450	10,7	270	5,08	1
200	LU1120017	150	480	11,9	300	6,70	1
225	LU1122517	150	510	13,4	338	9,11	1
250	LU1125017	250	540	14,8	375	11,99	1
280	LU1128017	250	400	16,6	420	12,68	1
315	LU1131517	250	460	18,7	472,5	17,70	1
355	LU1135517	300	540	21,1	532,5	26,22	1
400	LU1140017	300	560	23,7	600	29,80	1
450	LU1145017	300	580	26,7	675	39,10	1
500	LU1150017	350	650	29,7	750	61,80	1
560	LU1156017	350	680	33,2	840	82,00	1
630	LU1163017	350	730	37,4	945	95,80	1



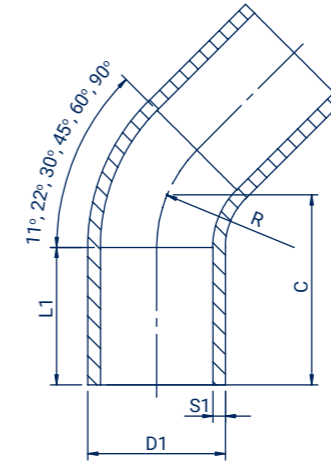
SEAMLESS BEND 22° SDR 11



Size D1 (mm)	Code	L1 (mm)	C (mm)	S1 (mm)	R (mm)	Weight (kg)	Packing
32	LU2203211	70	98	2,9	48	0,08	1
40	LU2204011	75	106	3,7	60	0,10	1
50	LU2205011	80	130	4,6	75	0,20	1
63	LU2206311	90	150	5,8	94,5	0,35	1
75	LU2207511	100	155	6,8	112,5	0,58	1
90	LU2209011	150	350	8,2	135	1,42	1
110	LU2211011	150	330	10	165	2,07	1
125	LU2212511	150	380	11,4	188	3,06	1
140	LU2214011	150	395	12,7	210	3,96	1
160	LU2216011	150	420	14,6	480	5,66	1
180	LU2218011	150	450	16,4	270	7,49	1
200	LU2220011	150	480	18,2	300	9,88	1
225	LU2222511	150	510	20,5	338	13,36	1
250	LU2225011	250	550	22,7	375	17,66	1
280	LU2228011	250	400	25,4	420	16,30	1
315	LU2231511	250	460	28,6	472,5	21,85	1
355	LU2235511	300	540	32,2	532,5	37,00	1
400	LU2240011	300	560	36,3	600	45,90	1
450	LU2245011	300	580	40,9	675	60,20	1
500	LU2250011	350	650	45,4	750	83,30	1
560	LU2256011	350	680	50,8	840	108,60	1
630	LU2263011	350	730	57,2	945	171,00	1



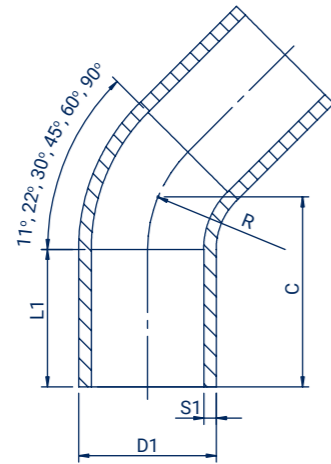
SEAMLESS BEND 22° SDR 17



Size D1 (mm)	Code	L1 (mm)	C (mm)	S1 (mm)	R (mm)	Weight (kg)	Packing
63	LU2206317	90	150	3,8	94,5	0,26	1
75	LU2207517	100	155	4,5	112,5	0,36	1
90	LU2209017	150	350	5,4	135	0,98	1
110	LU2211017	120	219	6,6	165	1,12	1
125	LU2212517	150	225	7,4	187,5	1,48	1
140	LU2214017	150	231	8,3	210	1,98	1
160	LU2216017	150	239	9,5	240	2,42	1
180	LU2218017	150	450	10,7	270	5,08	1
200	LU2220017	150	480	11,9	300	6,70	1
225	LU2222517	150	510	13,4	338	9,11	1
250	LU2225017	250	550	14,8	375	11,99	1
280	LU2228017	250	400	16,6	420	12,30	1
315	LU2231517	250	460	18,7	472,5	17,70	1
355	LU2235517	300	540	21,1	532,5	26,00	1
400	LU2240017	300	560	23,7	600	34,00	1
450	LU2245017	300	580	26,7	675	39,10	1
500	LU2250017	350	650	29,7	750	54,00	1
560	LU2256017	350	680	33,2	840	70,30	1
630	LU2263017	350	730	37,4	945	95,80	1



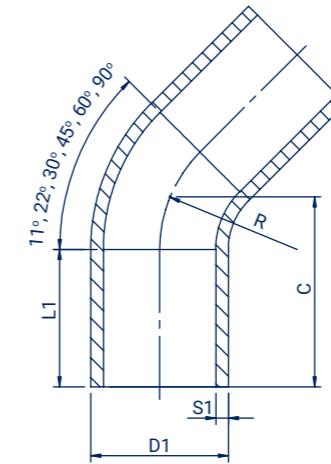
SEAMLESS BEND 30° SDR 11



Size D1 (mm)	Code	L1 (mm)	C (mm)	S1 (mm)	R (mm)	Weight (kg)	Packing
32	LU3003211	70	98	2,9	48	0,08	1
40	LU3004011	75	106	3,7	60	0,12	1
50	LU3005011	80	130	4,6	75	0,22	1
63	LU3006311	90	150	5,8	94,5	0,35	1
75	LU3007511	100	155	6,8	112,5	0,47	1
90	LU3009011	150	350	8,2	135	1,42	1
110	LU3011011	150	330	10	165	2,07	1
125	LU3012511	150	380	11,4	188	3,06	1
140	LU3014011	150	400	12,7	210	3,96	1
160	LU3016011	150	420	14,6	480	5,54	1
180	LU3018011	150	450	16,4	270	7,49	1
200	LU3020011	150	480	18,2	300	9,88	1
225	LU3022511	150	520	20,5	338	13,36	1
250	LU3025011	250	560	22,7	375	17,66	1
280	LU3028011	250	400	25,4	420	18,28	1
315	LU3031511	250	460	28,6	472,5	26,00	1
355	LU3035511	300	540	32,2	532,5	31,70	1
400	LU3040011	300	560	36,3	600	50,20	1
450	LU3045011	300	580	40,9	675	62,00	1
500	LU3050011	350	650	45,4	750	91,00	1
560	LU3056011	350	680	50,8	840	116,00	1
630	LU3063011	350	730	57,2	945	173,00	1



SEAMLESS BEND 30° SDR 17



Size D1 (mm)	Code	L1 (mm)	C (mm)	S1 (mm)	R (mm)	Weight (kg)	Packing
63	LU3006317	90	150	3,8	94,5	0,25	1
75	LU3007517	100	155	4,5	112,5	0,39	1
90	LU3009017	150	350	5,4	135	0,98	1
110	LU3011017	120	219	6,6	165	1,18	1
125	LU3012517	150	225	7,4	187,5	1,46	1
140	LU3014017	150	231	8,3	210	1,80	1
160	LU3016017	150	239	9,5	240	2,56	1
180	LU3018017	150	450	10,7	270	5,08	1
200	LU3020017	150	480	11,9	300	6,70	1
225	LU3022517	150	520	13,4	338	9,11	1
250	LU3025017	250	560	14,8	375	11,99	1
280	LU3028017	250	400	16,6	420	13,60	1
315	LU3031517	250	460	18,7	472,5	17,70	1
355	LU3035517	300	540	21,1	532,5	26,00	1
400	LU3040017	300	560	23,7	600	29,80	1
450	LU3045017	300	580	26,7	675	39,10	1
500	LU3050017	350	650	29,7	750	61,80	1
560	LU3056017	350	680	33,2	840	83,00	1
630	LU3063017	350	730	37,4	945	95,80	1



SEAMLESS BEND 45°

SDR 11



water
16 bar



gas
10 bar



hydrogen
10 bar



PE 100-RC
material



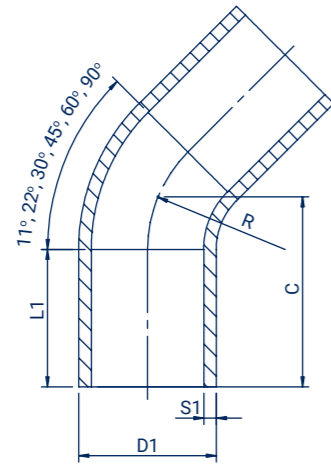
10 MPa



butt
welding



electrofusion
welding



Size D1 (mm)	Code	L1 (mm)	C (mm)	S1 (mm)	R (mm)	Weight (kg)	Packing
32	LU4503211	70	105	2,9	48	0,07	1
40	LU4504011	75	110	3,7	60	0,11	1
50	LU4505011	80	139	4,6	75	0,22	1
63	LU4506311	90	161	5,8	94,5	0,38	1
75	LU4507511	100	168	6,8	112,5	0,54	1
90	LU4509011	150	350	8,2	135	1,42	1
110	LU4511011	150	340	10	165	2,07	1
125	LU4512511	150	380	11,4	188	3,06	1
140	LU4514011	150	405	12,7	210	3,96	1
160	LU4516011	150	425	14,6	240	5,54	1
180	LU4518011	150	460	16,4	270	7,49	1
200	LU4520011	150	495	18,2	300	9,88	1
225	LU4522511	150	525	20,5	338	13,36	1
250	LU4525011	250	570	22,7	375	17,66	1
280	LU4528011	250	460	25,4	420	20,05	1
315	LU4531511	250	535	28,6	472,5	29,28	1
355	LU4535511	300	620	32,2	532,5	42,20	1
400	LU4540011	300	650	36,3	600	56,00	1
450	LU4545011	300	680	40,9	675	69,80	1
500	LU4550011	350	760	45,4	750	102,40	1
560	LU4556011	350	800	50,8	840	141,00	1
630	LU4563011	350	870	57,2	945	186,00	1



SEAMLESS BEND 45°

SDR 17



water
10 bar



gas
5 bar



hydrogen
5 bar



PE 100-RC
material



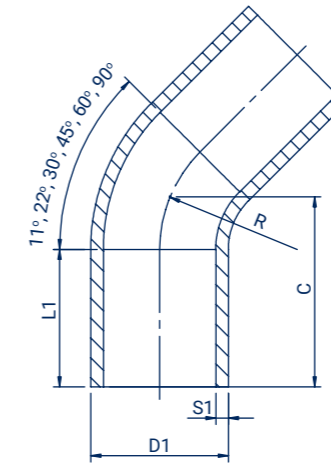
10 MPa



butt
welding



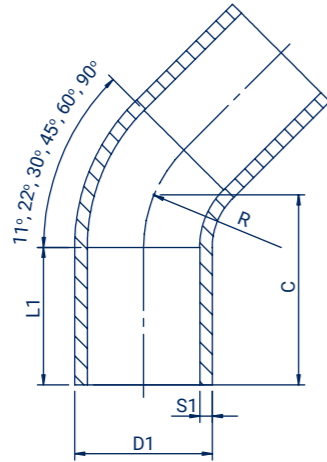
electrofusion
welding



Size D1 (mm)	Code	L1 (mm)	C (mm)	S1 (mm)	R (mm)	Weight (kg)	Packing
63	LU4506317	90	161	3,8	94,5	0,30	1
75	LU4507517	100	168	4,5	112,5	0,40	1
90	LU4509017	150	350	5,4	135	0,98	1
110	LU4511017	120	243	6,6	165	1,22	1
125	LU4512517	150	253	7,4	187,5	1,60	1
140	LU4514017	150	262	8,3	210	1,94	1
160	LU4516017	150	274	9,5	240	2,75	1
180	LU4518017	150	460	10,7	270	5,08	1
200	LU4520017	150	495	11,9	300	6,70	1
225	LU4522517	150	525	13,4	338	9,11	1
250	LU4525017	250	570	14,8	375	11,99	1
280	LU4528017	250	460	16,6	420	13,60	1
315	LU4531517	250	535	18,7	472,5	20,00	1
355	LU4535517	300	620	21,1	532,5	28,50	1
400	LU4540017	300	650	23,7	600	37,00	1
450	LU4545017	300	680	26,7	675	45,30	1
500	LU4550017	350	760	29,7	750	78,00	1
560	LU4556017	350	800	33,2	840	93,00	1
630	LU4563017	350	870	37,4	945	128,00	1



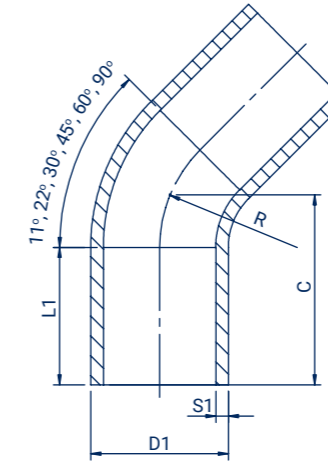
SEAMLESS BEND 60° SDR 11



Size D1 (mm)	Code	L1 (mm)	C (mm)	S1 (mm)	R (mm)	Weight (kg)	Packing
32	LU6003211	70	113	2,9	48	0,10	1
40	LU6004011	75	125	3,7	60	0,12	1
50	LU6005011	80	158	4,6	75	0,24	1
63	LU6006311	90	173	5,8	94,5	0,44	1
75	LU6007511	100	182	6,8	112,5	0,60	1
90	LU6009011	260	350	8,2	135	1,28	1
110	LU6011011	240	340	10	165	2,07	1
125	LU6012511	280	390	11,4	188	2,88	1
140	LU6014011	150	296	12,7	210	3,34	1
160	LU6016011	290	430	14,6	240	5,72	1
180	LU6018011	300	460	16,4	270	8,51	1
200	LU6020011	320	490	18,2	300	10,19	1
225	LU6022511	330	530	20,5	338	13,85	1
250	LU6025011	480	700	22,7	375	22,82	1
280	LU6028011	250	530	25,4	420	24,18	1
315	LU6031511	250	612	28,6	472,5	32,80	1
355	LU6035511	300	690	32,2	532,5	41,70	1
400	LU6040011	300	730	36,3	600	55,80	1
450	LU6045011	300	780	40,9	675	76,00	1
500	LU6050011	350	880	45,4	750	116,50	1
560	LU6056011	350	930	50,8	840	139,50	1
630	LU6063011	350	1000	57,2	945	198,00	1



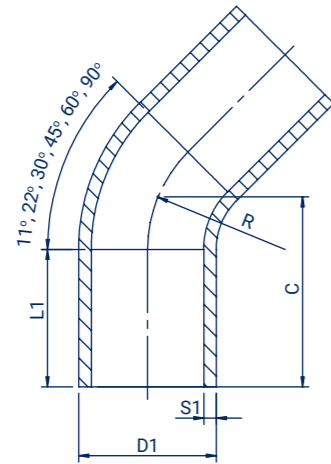
SEAMLESS BEND 60° SDR 17



Size D1 (mm)	Code	L1 (mm)	C (mm)	S1 (mm)	R (mm)	Weight (kg)	Packing
63	LU6006317	90	173	3,8	94,5	0,27	1
75	LU6007517	100	182	4,5	112,5	0,42	1
90	LU6009017	260	350	5,4	135	0,88	1
110	LU6011017	120	270	6,6	165	1,37	1
125	LU6012517	150	283	7,4	187,5	1,67	1
140	LU6014017	150	296	8,3	210	2,20	1
160	LU6016017	150	313	9,5	240	3,20	1
180	LU6018017	300	460	10,7	270	5,77	1
200	LU6020017	320	490	11,9	300	7,10	1
225	LU6022517	330	530	13,4	338	9,39	1
250	LU6025017	250	500	14,8	375	9,50	1
280	LU6028017	250	530	16,6	420	15,78	1
315	LU6031517	250	612	18,7	472,5	19,50	1
355	LU6035517	300	690	21,1	532,5	30,10	1
400	LU6040017	300	730	23,7	600	38,20	1
450	LU6045017	300	780	26,7	675	53,70	1
500	LU6050017	350	880	29,7	750	73,90	1
560	LU6056017	350	930	33,2	840	98,20	1
630	LU6063017	350	1000	37,4	945	132,30	1



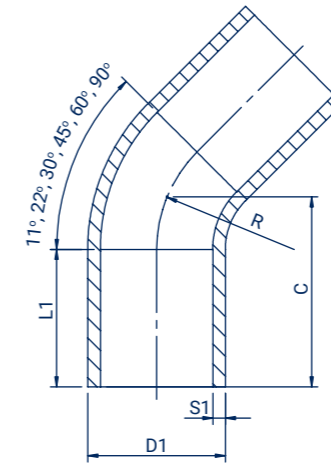
SEAMLESS BEND 90° SDR 11



Size D1 (mm)	Code	L1 (mm)	C (mm)	S1 (mm)	R (mm)	Weight (kg)	Packing
32	LU9003211	70	133	2,9	48	0,08	1
40	LU9004011	75	150	3,7	60	0,14	1
50	LU9005011	80	185	4,6	75	0,28	1
63	LU9006311	90	220	5,8	94,5	0,45	1
75	LU9007511	100	238	6,8	112,5	0,65	1
90	LU9009011	150	380	8,2	135	1,28	1
110	LU9011011	120	315	10	165	1,87	1
125	LU9012511	150	470	11,4	188	2,88	1
140	LU9014011	150	385	12,7	210	3,72	1
160	LU9016011	150	550	14,6	240	5,72	1
180	LU9018011	150	590	16,4	270	8,51	1
200	LU9020011	150	650	18,2	300	10,19	1
225	LU9022511	150	675	20,5	338	13,85	1
250	LU9025011	250	780	22,7	375	22,82	1
280	LU9028011	250	695	25,4	420	24,30	1
315	LU9031511	250	803	28,6	472,5	36,80	1
355	LU9035511	180	560	32,2	532,5	34,03	1
400	LU9040011	300	980	36,3	600	75,00	1
450	LU9045011	195	645	40,9	675	69,12	1
500	LU9050011	212	710	45,4	750	91,04	1
560	LU9056011	350	1290	50,8	840	176,00	1
630	LU9063011	350	1400	57,2	945	239,00	1



SEAMLESS BEND 90° SDR 17



Size D1 (mm)	Code	L1 (mm)	C (mm)	S1 (mm)	R (mm)	Weight (kg)	Packing
63	LU9006317	90	220	3,8	94,5	0,32	1
75	LU9007517	100	238	4,5	112,5	0,46	1
90	LU9009017	150	380	5,4	135	0,88	1
110	LU9011017	120	340	6,6	165	1,24	1
125	LU9012517	150	363	7,4	187,5	1,90	1
140	LU9014017	150	385	8,3	210	2,66	1
160	LU9016017	150	415	9,5	240	3,36	1
180	LU9018017	150	590	10,7	270	5,77	1
200	LU9020017	150	650	11,9	300	7,10	1
225	LU9022517	150	675	13,4	338	9,39	1
250	LU9025017	250	650	14,8	375	12,50	1
280	LU9028017	250	695	16,6	420	17,10	1
315	LU9031517	250	803	18,7	472,5	25,00	1
355	LU9035517	300	900	21,1	532,5	41,22	1
400	LU9040017	300	980	23,7	600	49,70	1
450	LU9045017	195	645	26,7	675	50,72	1
500	LU9050017	212	710	29,7	750	66,94	1
560	LU9056017	350	1290	33,2	840	120,00	1
630	LU9063017	350	1400	37,4	945	169,00	1



SPIGOT TEE SDR 11



water
16 bar



gas
10 bar



hydrogen
10 bar



PE 100-RC
material



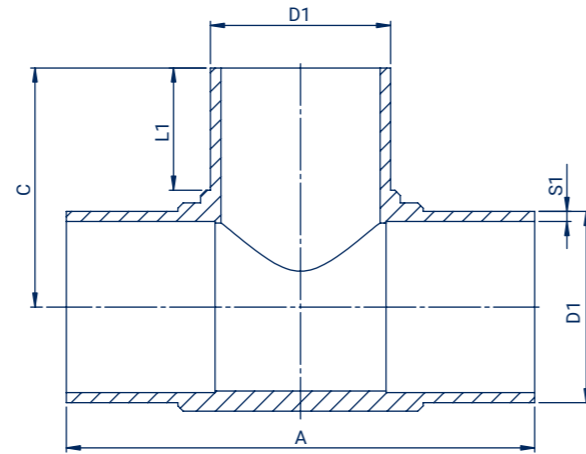
10 MPa



butt
welding



electrofusion
welding



Size D1 (mm)	Code	A (mm)	L1 (mm)	C (mm)	S1 (mm)	Weight (kg)	Packing
25	TD02511	117	39	59	3	0,04	-
32	TD03211	139	46	67	3	0,06	10
40	TD04011	165	50	84	3,7	0,11	10
50	TD05011	189	56	95	4,6	0,18	6
63	TD06311	216	65	105	5,8	0,34	16
75	TD07511	248	72	122	6,8	0,54	5
90	TD09011	292	84	146	5,4	0,87	10
110	TD11011	315	87	157	10	1,35	8
125	TD12511	332	90	165	11,4	1,95	6
140	TD14011	399	104	200	12,7	3,21	-
160	TD16011	396	106	200	14,6	3,50	2
180	TD18011	430	110	219	16,4	4,90	2
200	TD20011	471	121	235	18,2	6,55	2
225	TD22511	507	127	261	20,5	8,95	1
250	TD25011	556	135	281	22,7	12,32	1
280	TD28011	610	146	350	25,4	16,36	1
315	TD31511	665	155	330	28,6	22,24	1
355	TD35511	829	167	414	32,2	38,02	-
400	TD40011	913	198	457	36,3	52,01	-
450	TD45011	954	198	477	40,9	74,60	-
500	TD50011	1050	218	525	45,4	100,00	-



SPIGOT TEE SDR 17



water
10 bar



gas
5 bar



hydrogen
5 bar



PE 100-RC
material



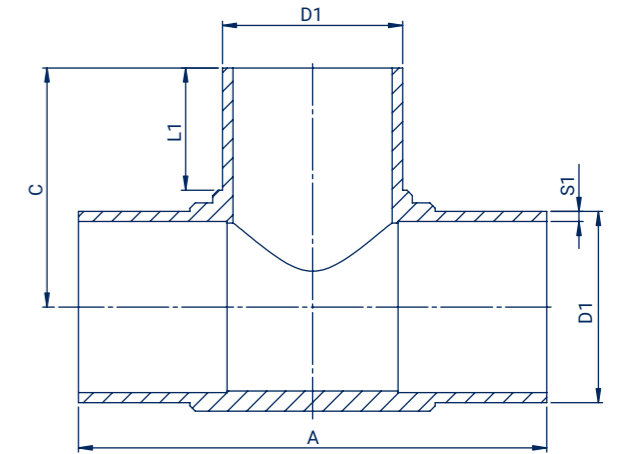
10 MPa



butt
welding



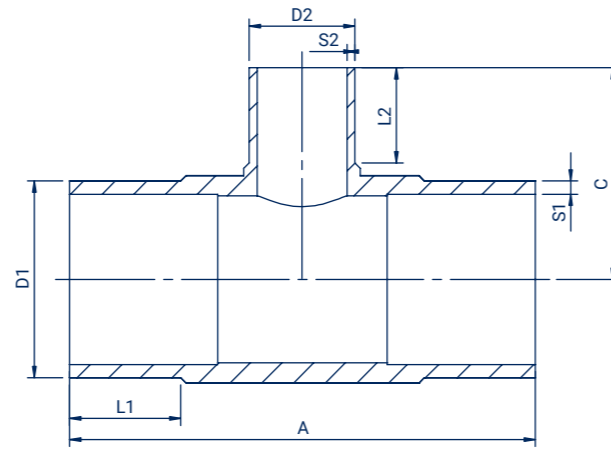
electrofusion
welding



Size D1 (mm)	Code	A (mm)	L1 (mm)	C (mm)	S1 (mm)	Weight (kg)	Packing
63	TD06317	222	63	113	3,8	0,26	10
75	TD07517	246	72	122	4,5	0,40	5
90	TD09017	285	81	142	5,4	0,60	10
110	TD11017	319	88	158	6,6	1,04	10
125	TD12517	331	90	165	7,4	1,32	6
140	TD14017	395	104	197	8,3	2,21	-
160	TD16017	396	104	200	9,5	2,54	4
180	TD18017	427	110	215	10,7	3,49	2
200	TD20017	466	118	240	11,9	4,59	2
225	TD22517	505	126,5	251	13,4	6,20	1
250	TD25017	557	136	279	14,8	8,37	1
280	TD28017	610	145	305	16,6	11,30	1
315	TD31517	665	155	330	18,7	15,50	1
355	TD35517	818	165	408	21,1	25,98	-
400	TD40017	910	197	455	23,7	36,06	-
450	TD45017	955	197	478	26,7	50,62	-
500	TD50017	1050	218	525	29,7	68,32	-



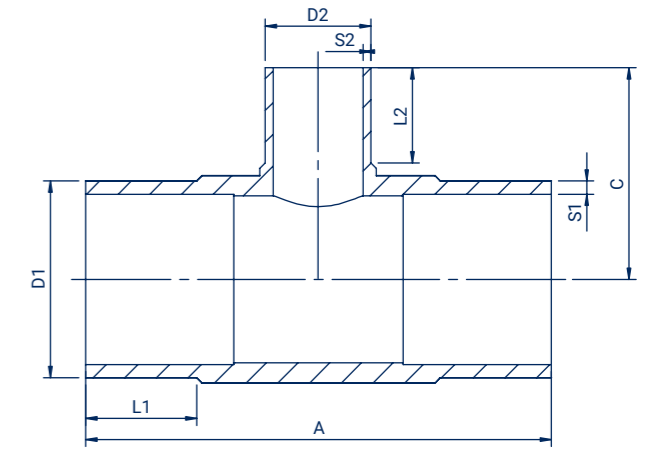
SPIGOT REDUCING TEE SDR 11



Size D1/D2 (mm)	Code	A (mm)	L1 (mm)	L2 (mm)	C (mm)	S1 (mm)	S2 (mm)	Weight (kg)	Packing
63/50	TD06305011	216	60	56	103	5,8	4,6	0,30	-
75/32	TD07503211	258	70	46	106	6,8	3	0,50	-
75/50	TD07505011	257	70	56	110	6,8	4,6	0,50	-
75/63	TD07506311	252	70	63	117	6,8	5,8	0,55	-
90/50	TD09005011	280	81	59	120	8,2	4,6	0,81	-
90/63	TD09006311	284	81	66	127	8,2	5,8	0,75	12
90/75	TD09007511	268	73	68	138	8,2	6,8	0,80	-
110/63	TD11006311	315	88	70	143	10	5,8	1,16	5
110/75	TD11007511Z	305	83	68	149	10	6,8	1,20	-
110/90	TD11009011	315	88	85	155	10	8,2	1,26	5
125/63	TD12506311	331	89	67	148	11,4	5,8	1,67	6
125/90	TD12509011	331	89	83	161	11,4	8,2	1,76	6
125/110	TD12511011	332	90	86	162	11,4	10	1,83	6
160/63	TD16006311	397	104	72	170	14,6	5,8	2,98	4
160/75	TD16007511	344	101	76	179	14,6	6,8	2,70	4
160/90	TD16009011	397	104	87	183	14,6	8,2	2,98	4
160/110	TD16011011	397	104	91	183	14,6	10	3,06	5
180/90	TD18009011	429	111	86	180	16,4	8,2	4,20	2
180/110	TD18011011	430	110	89	195	16,4	10	4,27	2
180/160	TD18016011	430	110	104	210	16,4	14,6	4,69	2
200/63	TD20006311	553	134	82	226	18,2	5,8	7,14	-
200/90	TD20009011	550	135	96	229	18,2	8,2	7,16	2
200/110	TD20011011Z	505	124	86	219	18,2	10	7,08	-
200/125	TD20012511	550	134	110	245	18,2	11,4	7,38	-
200/160	TD20016011	470	120	105	224	18,2	14,6	6,03	2
225/90	TD22509011	442	120	79	224	20,5	8,2	6,86	-
225/110	TD22511011	505	127	90	220	20,5	10	7,49	2
225/160	TD22516011	505	126	104	235	20,5	14,6	7,82	2
250/110	TD25011011	560	136	90	238	22,7	10	10,68	1
250/160	TD25016011	560	136	107	255	22,7	14,6	10,90	1
280/110	TD28011011	606	145	90	250	25,4	10	14,09	1
280/160	TD28016011	606	145	106	268	25,4	14,6	14,42	1
280/225	TD28022511	610	145	127	290	25,4	20,5	15,18	1
280/250	TD28025011	606	145	136	295	25,4	22,7	15,72	1
315/110	TD31511011	664	157	90	270	28,6	10	19,20	1
315/160	TD31516011	665	155	106	290	28,6	14,6	19,16	1
315/200	TD31520011	640	170	126	326	28,6	18,2	21,00	1
315/225	TD31522511	665	156	130	312	28,6	20,5	20,31	1
315/250	TD31525011	665	157	138	315	28,6	22,7	20,68	1



SPIGOT REDUCING TEE SDR 17



Size D1/D2 (mm)	Code	A (mm)	L1 (mm)	L2 (mm)	C (mm)	S1 (mm)	S2 (mm)	Weight (kg)	Packing
75/63	TD07506317	255	70	63	117	4,5	3,8	0,45	-
90/63	TD09006317	287	83	67	131	5,4	3,8	0,53	12
90/75	TD09007517	272	73	68	138	5,4	4,5	0,59	-
110/63	TD11006317	315	88	68	143	6,6	3,8	0,92	6
110/75	TD11007517Z	311	83	70	152	6,6	4,5	0,90	-
110/90	TD11009017	317	87	84	157	6,6	5,4	1,00	5
125/63	TD12506317	330	89	67	148	7,4	3,8	1,15	6
125/90	TD12509017	330	88	82	165	7,4	5,4	1,21	6
125/110	TD12511017	331	89	85	163	7,4	6,6	1,26	6
160/63	TD16006317	395	104	71	170	9,5	3,8	2,13	6
160/75	TD16007517	344	101	76	179	9,5	4,5	1,90	4
160/90	TD16009017	395	103	85	185	9,5	5,4	2,22	5
160/110	TD16011017	395	103	89	183	9,5	6,6	2,27	5
180/90	TD18009017	425	110	84	195	10,4	5,4	3,01	2
180/110	TD18011017	426	110	87	190	10,7	6,6	3,07	2
180/160	TD18016017	425	110	103	210	10,7	9,5	3,30	2
200/63	TD20006317	550	134	80	225	11,9	3,8	5,22	-
200/90	TD20009017	504	125	82	216	11,9	5,4	5,01	2
200/110	TD20011017Z	506	124	85	219	11,9	6,6	5,19	-
200/125	TD20012517	550	134	110	245	11,9	7,4	5,40	-
200/160	TD20016017	465	119	105	223	11,9	9,5	4,25	2
225/90	TD22509017	555	129	82	226	13,4	5,4	7,05	3
225/110	TD22511017	505	126	89	220	13,4	6,6	5,34	2
225/160	TD22516017	505	126	104	235	13,4	9,5	5,53	2
250/110	TD25011017	550	135	90	236	14,8	6,6	7,34	1
225/160	TD25016017	550	135	105	250	14,8	9,5	7,60	1
250/225	TD25022517	550	135	126	270	14,8	13,4	8,28	1
280/110	TD28011017	605	145	90	255	16,6	6,6	10,05	1
280/160	TD28016017	600	145	106	280	16,6	9,5	10,19	1
280/225	TD28022517	605	145	126	290	16,6	13,4	10,92	1
280/250	TD28025017	605	144	135	295	16,6	14,8	11,29	1
315/110	TD31511017	663	156	90	270	18,7	6,6	13,61	1
315/160	TD31516017	660	155	106	290	18,7	9,5	13,68	1
315/200	TD31520017	640	168	130	331	18,7	11,9	15,94	1
315/225	TD31522517	660	155	128	307	18,7	13,4	14,27	1
315/250	TD31525017	665	156	138	320	18,7	14,8	14,54	1



SPIGOT END CAP SDR 11



water
16 bar



gas
10 bar



hydrogen
10 bar



PE 100-RC
material



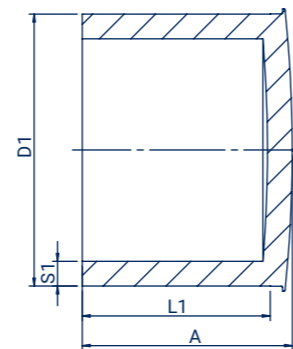
10 MPa



butt
welding



electrofusion
welding



Size D1 (mm)	Code	A (mm)	L1 (mm)	S1 (mm)	Weight (kg)	Packing
25	ZD02511	45	34	3	0,01	200
32	ZD03211	45	34	3	0,02	120
40	ZD04011	47	34	3,7	0,03	200
50	ZD05011	49	34	4,6	0,05	200
63	ZD06311	61	45	5,8	0,09	140
75	ZD07511	68	51	6,8	0,14	75
90	ZD09011	80	71	8,2	0,24	50
110	ZD11011	85	76	10	0,29	30
125	ZD12511	85	81	11,4	0,43	25
140	ZD14011	89	85	12,7	0,75	15
160	ZD16011	89	82	14,6	0,84	15
180	ZD18011	167	113	16,4	1,42	-
200	ZD20011	180	117	18,2	1,91	-
225	ZD22511	203	127	20,5	2,76	-
250	ZD25011	217	138	22,7	3,66	4
280	ZD28011	239	151	25,4	5,01	-
315	ZD31511	256	158	28,6	6,85	-
355	ZD35511	291	175	32,2	9,73	-
400	ZD40011	316	193	36,3	13,57	-



SPIGOT END CAP SDR 17



water
10 bar



gas
5 bar



hydrogen
5 bar



PE 100-RC
material



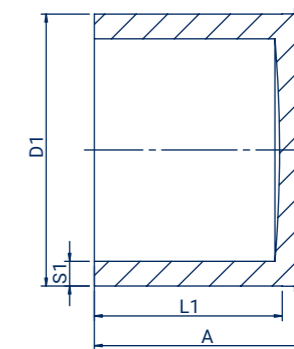
10 MPa



butt
welding



electrofusion
welding



Size D1 (mm)	Code	A (mm)	L1 (mm)	S1 (mm)	Weight (kg)	Packing
63	ZD06317	61	45	3,8	0,06	140
75	ZD07517	68	51	4,5	0,09	75
90	ZD09017	80	71	5,4	0,16	50
110	ZD11017	85	76	6,6	0,24	30
125	ZD12517	85	81	7,4	0,36	25
140	ZD14017	89	85	8,3	0,51	15
160	ZD16017	86	84	9,5	0,77	15
180	ZD18017	166	114	10,7	0,98	-
200	ZD20017	179	117	11,9	1,30	-
225	ZD22517	203	127	13,4	1,81	-
250	ZD25017	216	140	14,8	2,42	-
280	ZD28017	238	149	16,6	3,36	-
315	ZD31517	258	158	18,7	4,57	-
355	ZD35517	281	175	21,1	6,46	-
400	ZD40017	310	195	23,7	9,29	1



LONG SPIGOT FLANGE ADAPTOR SDR 11



water
16 bar



gas
10 bar



hydrogen
10 bar



PE 100-RC
material



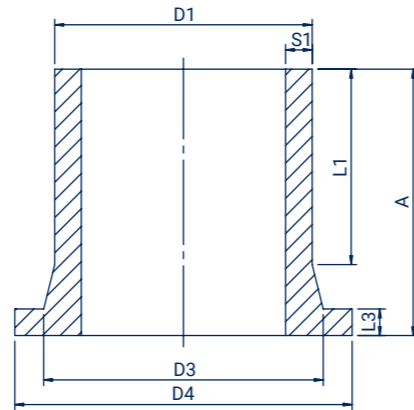
10 MPa



butt
welding



electrofusion
welding



Size D1 (mm)	Code	D4 (mm)	D3 (mm)	A (mm)	L1 (mm)	L3 (mm)	S1 (mm)	Weight (kg)	Packing
32	TK03211	68	40	86	62	10	3	0,05	100
40	TK04011	78	50	89	62	11	3,7	0,08	25
50	TK05011	88	60	90	62	12	4,6	0,12	50
63	TK06311	102	69	104	68	14	5,8	0,18	50
75	TK07511	120	81	123	91	16	6,8	0,30	30
90	TK09011	136	98	138	105	18	8,2	0,44	20
110	TK11011	154	121	155	111	20	10	0,66	12
125	TK12511	157	128	167	122	25	11,4	0,86	20
140	TK14011	189	155	174	126	26	12,7	1,20	12
160	TK16011	209	165	206	154	26	14,6	1,78	12
180	TK18011	212	182	176	152	21	16,4	1,74	12
200	TK20011	268	234	187	133	33	18,2	2,89	5
225	TK22511	269	236	185	130	33	20,5	2,95	4
250	TK25011	326	286	216	140	36	22,7	4,96	6
280	TK28011	323	293	231	185	36	25,4	5,26	6
315	TK31511	371	337	237	165	36	28,6	7,23	2
355	TK35511	430	376	243	164	40	32,3	8,90	2
400	TK40011	480	430	259	179	46	36,4	11,92	1
450	TK45011	585	517	301	195	60	40,9	19,93	-
500	TK50011	585	533	314	212	60	45,5	21,99	-
560	TK56011	685	618	345	235	72	50,9	33,80	-
630	TK63011	685	645	360	255	65	57,3	37,50	-



LONG SPIGOT FLANGE ADAPTOR SDR 17



water
10 bar



gas
5 bar



hydrogen
5 bar



PE 100-RC
material



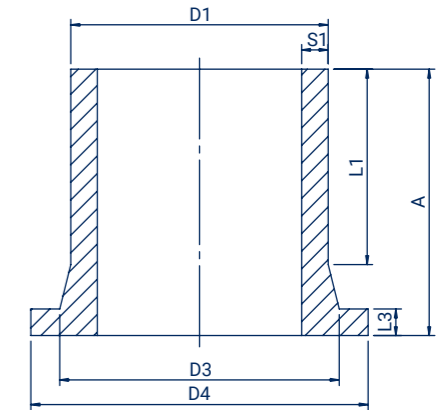
10 MPa



butt
welding



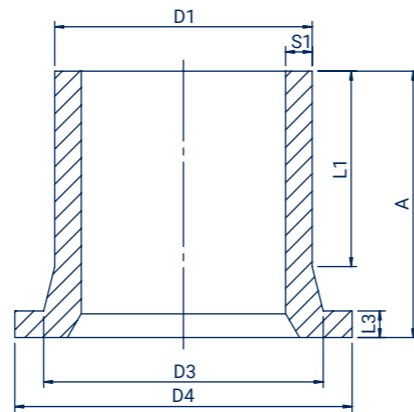
electrofusion
welding



Size D1 (mm)	Code	D4 (mm)	D3 (mm)	A (mm)	L1 (mm)	L3 (mm)	S1 (mm)	Weight (kg)	Packing
63	TK06317	101	72	104	67	14	3,8	0,15	50
75	TK07517	120	84	126	94	16	4,5	0,25	30
90	TK09017	136	100	140	106	17	5,4	0,35	20
110	TK11017	154	115	155	112	20	6,6	0,54	12
125	TK12517	156	129	171	125	25	7,4	0,65	20
140	TK14017	188	156	174	126	26	8,3	0,93	12
160	TK16017	209	166	207	157	25	9,5	1,44	12
180	TK18017	211	185	178	153	21	10,7	1,24	12
200	TK20017	269	233	187	132	33	11,9	2,31	5
225	TK22517	267	236	190	131	33	13,4	2,22	4
250	TK25017	321	286	217	137	36	14,8	3,97	6
280	TK28017	322	292	228	143	36	16,6	3,94	6
315	TK31517	372	336	238	156	36	18,7	5,25	2
355	TK35517	430	376	233	164	30	21,1	6,25	2
400	TK40017	480	430	246	179	33	23,7	8,13	1
450	TK45017	585	517	287	195	46	26,7	13,83	-
500	TK50017	585	533	300	212	46	29,7	15,21	-
560	TK56017	685	618	330	235	50	33,2	17,18	-
630	TK63017	685	645	340	255	50	37,4	24,86	-
500	TK50011	585	533	314	212	60	45,5	21,99	-
560	TK56011	685	618	345	235	72	50,9	33,80	-
630	TK63011	685	645	360	255	65	57,3	37,50	-



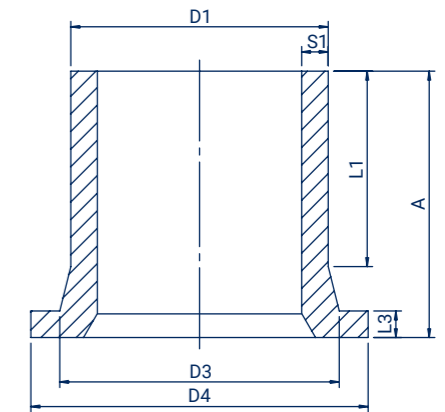
SPIGOT FLANGE ADAPTOR CHAMFERED SDR 11



Size D1 (mm)	Code	D4 (mm)	D3 (mm)	A (mm)	L1 (mm)	L3 (mm)	S1 (mm)	Weight (kg)	Packing
110	TK11011C	154	121	155	111	20	10	0,67	12
140	TK14011C	189	155	174	126	26	12,7	1,28	12
160	TK16011C	209	165	206	154	26	14,6	1,78	12
180	TK18011C	212	182	176	152	21	16,4	1,74	12
200	TK20011C	268	234	187	133	33	18,2	2,81	5
225	TK22511C	269	236	185	130	33	20,5	2,90	4
250	TK25011C	321	286	216	140	36	22,7	4,65	6
280	TK28011C	323	293	231	185	36	25,4	5,63	6
315	TK31511C	371	337	237	165	36	28,6	7,49	2



SPIGOT FLANGE ADAPTOR CHAMFERED SDR 17



Size D1 (mm)	Code	D4 (mm)	D3 (mm)	A (mm)	L1 (mm)	L3 (mm)	S1 (mm)	Weight (kg)	Packing
200	TK20017C	269	233	187	132	33	11,9	2,31	5
225	TK22517C	269	236	190	131	33	13,4	2,22	4
250	TK25017C	321	286	217	137	36	14,8	3,97	6
280	TK28017C	322	292	228	143	36	16,6	3,94	6
315	TK31517C	371,5	336	238	156	36	18,7	5,25	2



LONG SPIGOT REDUCER

SDR 11



water
16 bar



gas
10 bar



hydrogen
10 bar



PE 100-RC
material



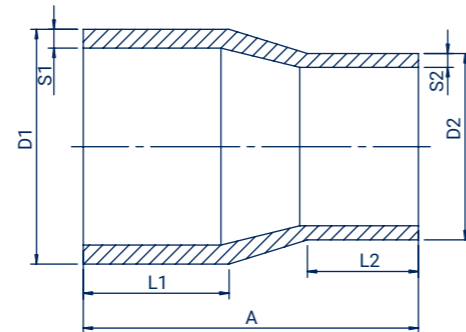
10 MPa



butt
welding



electrofusion
welding



Size D1/D2 (mm)	Code	A (mm)	L1 (mm)	L2 (mm)	S1 (mm)	S2 (mm)	Weight (kg)	Packing
25/20	RD02502011	87	41	41	3	3	0,02	-
32/20	RD03202011	95	44	41	3	3	0,02	-
32/25	RD03202511	95	44	41	3	3	0,02	-
40/25	RD04002511	102	49	41	3,7	3	0,03	-
40/32	RD04003211	101	49	44	3,7	3	0,04	-
50/25	RD05002511	118	55	43	4,6	3	0,06	5
50/32	RD05003211	118	58	45	4,6	3	0,07	5
50/40	RD05004011	126	56	49	4,6	3,7	0,06	-
63/32	RD06303211	135	63	48	5,8	3	0,11	-
63/40	RD06304011	129	63	49	5,8	3,7	0,12	-
63/50	RD06305011	148	63	58	5,8	4,6	0,14	10
75/50	RD07505011	148	70	57	6,8	4,6	0,20	-
75/63	RD07506311	145	70	58	6,8	5,8	0,20	50
90/50	RD09005011	174	79	57	8,2	4,6	0,28	20
90/63	RD09006311	168	74	63	8,2	5,8	0,26	30
90/75	RD09007511	160	74	65	8,2	6,8	0,28	30
110/63	RD11006311	175	81	64	10	5,8	0,39	24
110/75	RD11007511	169	82	63	10	6,8	0,40	20
110/90	RD11009011	173	81	71	10	8,2	0,45	20
125/63	RD12506311	200	91	69	11,4	5,8	0,64	-
125/90	RD12509011	202	91	80	11,4	8,2	0,66	-
125/110	RD12511011	200	90	90	11,4	10	0,76	-
140/90	RD14009011	237	112	86	12,7	8,2	0,95	-
140/110	RD14011011	230	116	90	12,7	10	1,03	-
140/125	RD14012511	235	117	96	12,7	11,4	1,14	-

Size D1/D2 (mm)	Code	A (mm)	L1 (mm)	L2 (mm)	S1 (mm)	S2 (mm)	Weight (kg)	Packing
160/90	RD16009011	254	109	84	14,6	8,2	1,25	5
160/110	RD16011011	254	110	89	14,6	10	1,35	10
160/125	RD16012511	254	110	95	14,6	11,4	1,43	5
160/140	RD16014011	254	110	106	14,6	12,7	1,53	-
180/110	RD18011011	275	124	93	16,4	10	1,79	-
180/125	RD18012511	245	105	87	16,4	11,4	1,73	-
180/160	RD18016011	279	126	125	16,4	14,6	2,19	-
200/140	RD20014011	279	123	114	18,2	12,7	2,33	-
200/160	RD20016011	277	122	122	18,2	14,6	2,44	-
200/180	RD20018011	279	126	120	18,2	16,4	2,73	-
225/160	RD22516011	295	132	123	20,5	14,6	3,14	2
225/180	RD22518011	285	130	118	20,5	16,4	3,30	-
225/200	RD22520011	272	126	120	20,5	18,2	3,40	-
250/160	RD25016011	314	154	112	22,7	14,6	3,99	2
250/180	RD25018011	316	151	105	22,7	16,4	4,36	-
250/200	RD25020011	324	151	116	22,7	18,2	4,73	-
250/225	RD25022511	330	155	122	22,7	20,5	5,28	2
280/200	RD28020011	345	140	116	25,4	18,2	5,79	-
280/225	RD28022511	335	142	122	25,4	20,5	6,11	-
280/250	RD28025011	340	139	135	25,4	22,7	6,69	-
315/225	RD31522511	365	150	125	28,6	20,5	8,13	-
315/250	RD31525011	365	150	134	28,6	22,7	8,47	-
315/280	RD31528011	365	150	145	28,6	25,4	8,89	-



LONG SPIGOT REDUCER

SDR 17



water
10 bar



gas
5 bar



hydrogen
5 bar



PE 100-RC
material



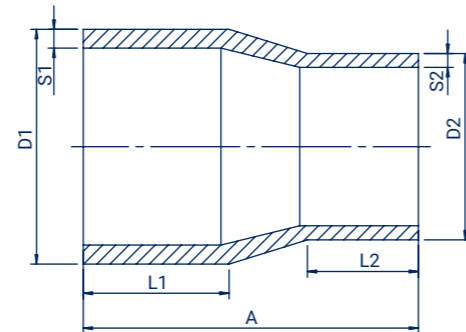
MRS
10 MPa



butt
welding



electrofusion
welding



Size D1/D2 (mm)	Code	A (mm)	L1 (mm)	L2 (mm)	S1 (mm)	S2 (mm)	Weight (kg)	Packing
75/63	RD07506317	146	68	60	4,6	3,9	0,17	50
90/63	RD09006317	168	74	63	5,6	3,9	0,24	30
90/75	RD09007517	160	75	63	5,6	4,6	0,26	30
110/63	RD11006317	176	80	64	6,8	3,9	0,36	24
110/75	RD11007517	170	82	64	6,8	4,6	0,35	20
110/90	RD11009017	173	81	71	6,8	5,6	0,43	20
125/63	RD12506317	200	90	68	7,4	3,8	0,45	-
125/90	RD12509017	200	90	81	7,4	5,4	0,46	-
125/110	RD12511017	200	91	90	7,4	6,6	0,53	-
140/90	RD14009017	235	112	86	8,3	5,4	0,64	-
140/110	RD14011017	237	114	91	8,3	6,6	0,70	-
140/125	RD14012517	235	117	96	8,3	7,4	0,74	-
160/90	RD16009017	254	109	84	9,5	5,4	0,83	5
160/110	RD16011017	254	110	89	9,5	6,6	0,89	10
160/125	RD16012517	254	110	95	9,5	7,4	0,93	5
160/140	RD16014017	254	110	106	9,5	8,3	1,00	-
180/110	RD18011017	275	124	93	10,7	6,6	1,19	-
180/125	RD18012517	250	105	87	10,7	7,4	1,17	-
180/140	RD18014017	277	123	114	10,7	8,3	1,33	-
180/160	RD18016017	279	126	125	10,7	9,5	1,43	-
200/160	RD20016017	278	122	124	11,9	9,5	1,69	4
200/180	RD20018017	279	126	120	11,9	10,7	1,79	-
225/160	RD22516017	295	134	123	13,4	9,5	2,14	2
225/180	RD22518017	275	125	118	13,4	10,7	2,24	-
225/200	RD22520017	272	126	120	13,4	11,9	2,26	-
250/160	RD25016017	308	151	98	14,8	9,5	2,88	2
250/180	RD25018017	316	153	105	14,8	10,7	2,99	-
250/200	RD25020017	325	154	113	14,8	11,9	3,25	-
250/225	RD25022517	330	155	122	14,8	13,4	3,70	2
280/200	RD28020017	330	142	116	16,6	11,9	3,94	-
280/225	RD28022517	335	140	124	16,6	13,4	4,08	-
280/250	RD28025017	340	139	134	16,6	14,8	4,45	-
315/225	RD31522517	371	152	125	18,7	13,4	5,42	-
315/250	RD31525017	367	151	133	18,7	14,8	5,72	-
315/280	RD31528017	369	150	140	18,7	16,6	5,98	-



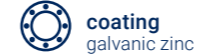
GALVANIZED FLANGES



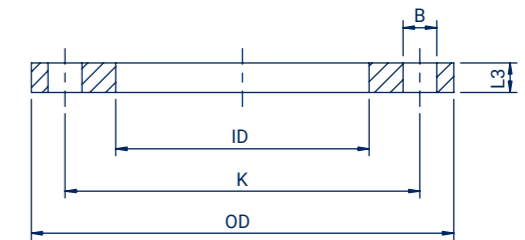
water



gas



coating
galvanic zinc



D2* (mm)	D1** (mm)	Code	OD (mm)	ID (mm)	B (mm)	K (mm)	L3 (mm)	Holes	Screws	Weight (kg)	Pressure (bar)	Packing
DN20	25	KOC025020	105	34	14	75	12	4	M12	0,78	10/16	-
DN25	32	KOC032025	115	42	14	85	14	4	M12	0,90	10/16	-
DN32	40	KOC040032	140	52	18	100	14	4	M16	1,30	10/16	-
DN40	50	KOC050040	150	63	18	110	16	4	M16	1,50	10/16	-
DN50	63	KOC063050	165	78	18	125	16	4	M16	1,90	10/16	-
DN65	75	KOC075065	185	92	18	145	16	4	M16	2,30	10/16	-
DN80	90	KOC090080	200	108	18	160	18	8	M16	2,80	10/16	-
DN100	110	KOC110100	220	128	18	180	18	8	M16	3,20	10/16	-
DN100	125	KOC125100	220	135	18	180	18	8	M16	3,00	10/16	-
DN125	140	KOC140125	250	158	18	210	18	8	M16	3,90	10/16	-
DN150	160	KOC160150	285	178	22	240	20	8	M20	5,20	10/16	-
DN150	180	KOC180150	285	186	22	240	20	8	M20	5,00	10/16	-
DN200	200	KOC20020010	340	235	22	295	20	8	M20	6,70	10	-
DN200	200	KOC20020016	340	235	22	295	23	12	M20	7,30	16	-
DN200	225	KOC22520010	340	238	22	295	20	8	M20	6,70	10	-
DN200	225	KOC22520016	340	238	22	295	23	12	M20	7,30	16	-
DN250	250	KOC25025010	395	289	22	350	24	12	M20	10,50	10	-
DN250	250	KOC25025016	405	289	26	355	29	12	M24	12,50	16	-
DN250	280	KOC28025010	395	295	22	350	24	12	M20	10,20	10	-
DN250	280	KOC28025016	405	295	26	355	29	12	M24	12,00	16	-
DN300	315	KOC31530010	445	339	22	400	26	12	M20	13,60	10	-
DN300	315	KOC31530016	460	339	26	410	34	12	M24	17,00	16	-
DN350	355	KOC35535010	505	377	22	460	30	16	M20	21,00	10	-
DN350	355	KOC35535016	520	376	26	470	36	16	M24	26,00	16	-
DN400	400	KOC40040010	565	431	26	515	32	16	M24	24,00	10	-
DN400	400	KOC40040016	580	431	30	525	41	16	M27	31,00	16	-
DN450	450	KOC45045010	615	470	26	565	34	20	M24	26,00	10	-
DN450	450	KOC45045016	670	517	30	585	42	20	M30	39,00	16	-
DN500	450	KOC45050010	670	517	26	620	38	20	M24	39,00	10	-
DN500	450	KOC45050016	715	517	33	650	42	20	M30	57,00	16	-
DN500	500	KOC50050010	670	533	26	620	38	20	M24	36,00	10	-
DN500	500	KOC50050016	715	533	33	650	42	20	M30	52,00	16	-
DN600	560	KOC56060010	780	618	30	725	42	20	M27	53,00	10	-
DN600	560	KOC56060016	840	618	36	770	48	20	M30	91,00	16	-
DN600	630	KOC63060010	780	645	30	725	42	20	M27	47,00	10	-
DN600	630	KOC63060016	840	645	36	770	48	20	M30	77,00	16	-

* Size designation of flange | ** Nominal outside diameter of pipe



COVERED FLANGES

PP



water

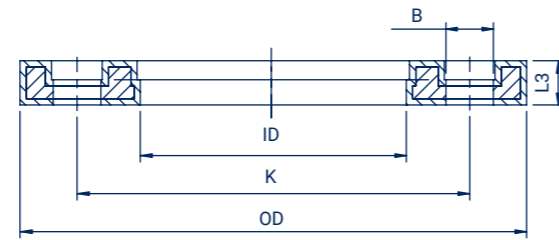


gas



coating

PP reinforced with glass fiber



D2* (mm)	D1** (mm)	Code	OD (mm)	ID (mm)	B (mm)	K (mm)	L3 (mm)	Holes	Screws	Weight (kg)	Pressure (bar)	Packing
DN15	20	KPP020015.IP	106	28	14	65	18	4	M12	0,40	10/16	-
DN20	25	KPP025020.IP	118	34	14	75	18	4	M12	0,40	10/16	-
DN25	32	KPP032025.IP	122	42	14	85	17	4	M12	0,40	10/16	-
DN32	40	KPP040032.IP	142	51	18	100	17	4	M16	0,50	10/16	-
DN40	50	KPP050040.IP	156	62	18	110	19	4	M16	0,70	10/16	-
DN50	63	KPP063050.IP	171	78	18	125	20	4	M16	0,90	10/16	-
DN65	75	KPP075065.IP	191	92	18	145	21	4	M16	1,00	10/16	-
DN80	90	KPP090080.IP	206	108	18	160	21	8	M16	1,10	10/16	30
DN100	110	KPP110100.IP	226	128	18	180	22	8	M16	1,50	10/16	-
DN100	125	KPP125100.IP	226	135	18	180	23	8	M16	1,40	10/16	-
DN125	140	KPP140125.IP	261	158	18	210	25	8	M16	1,70	10/16	-
DN150	160	KPP160150.IP	296	178	22	240	28	8	M20	1,80	10/16	-
DN150	180	KPP180150.IP	296	188	22	240	27	8	M20	1,90	10/16	15
DN200	200	KPP20020010.IP	350	235	22	295	32	8	M20	3,10	10	-
DN200	200	KPP20020016.IP	350	235	22	295	32	12	M20	3,31	16	-
DN200	225	KPP22520010.IP	350	238	22	295	31	8	M20	3,10	10	-
DN200	225	KPP22520016.IP	350	238	22	295	31	12	M20	3,19	16	-
DN250	250	KPP25025010.IP	412	288	22	350	36	12	M20	4,90	10	-
DN250	250	KPP25025016.IP	420	288	26	355	36	12	M24	5,17	16	-
DN250	280	KPP28025010.IP	412	294	22	350	35	12	M20	4,40	10	-
DN250	280	KPP28025016.IP	420	294	26	355	35	12	M24	6,30	16	-
DN300	315	KPP31530010.IP	462	338	22	400	42	12	M20	6,40	10	-
DN300	315	KPP31530016.IP	476	338	26	410	42	12	M24	9,70	16	-
DN350	355	KPP35535010.IP	525	376	22	460	52	16	M20	11,10	10	-
DN350	355	KPP35535016.IP	532	376	26	470	52	16	M24	16,30	16	-
DN400	400	KPP40040010.IP	586	430	26	515	56	16	M24	14,70	10	-
DN400	400	KPP40040016.IP	600	430	30	525	56	16	M27	20,60	16	-
DN500	450	KPP45050010.IP	690	514	27	620	55	20	M24	20,30	10	-
DN500	500	KPP50050010.IP	690	530	27	620	55	20	M24	19,20	10	-
DN600	560	KPP56060010.IP	804	615	30	725	62	20	M27	30,00	10	-
DN600	560	KPP56060016.IP	808	615	30	725	95	20	M27	47,68	16	-
DN600	630	KPP63060010.IP	804	642	30	725	62	20	M27	27,70	10	-
DN600	630	KPP63060016.IP	808	642	30	725	95	20	M27	47,68	16	-
DN700	710	KPP71070010.IP	912	740	30	840	49	24	M27	28,60	6	-
DN800	800	KPP80080010.IP	1 026	843	33	950	58	24	M30	39,30	6	-
DN900	900	KPP90090010.IP	1 129	947	33	1 050	62	28	M30	48,50	6	-
DN1000	1 000	KPP91091010.IP	1 245	1 050	36	1 160	70	28	M33	60,00	6	-

* Size designation of flange | ** Nominal outside diameter of pipe

Copying of any parts of the folder is prohibited and can be done only with the consent of FOX.

Technical Catalogue is not an offer within the meaning of the Law.

The manufacturer reserves the right to change the parameters and the technical information of the products in the catalogue.



43-330 Wilamowice
Wiezniow Oswiecimia 50
Poland

+48 33 845 70 23
+48 33 432 24 50

office@foxfittings.com
foxfittings.com

